

ELEKTRA

Challenges building the first zero emission inland water push boat ELEKTRA



ELEKTRA-Video



Prof. Dr.-Ing. Gerd Holbach
Workshop der ZKR:
„Alternative Energiequellen für elektrische Antriebe
in der Binnenschifffahrt“
20. April 2021

Gefördert durch:



Koordiniert durch:



Layout - Requirements and constraints – local and global emission-free



Main task „ELEKTRA“ in connection with „URSUS“:

- RoRo – project loads
regional / supra-regional transport of heavy duty gas turbines from the Siemens AG / Berlin plant

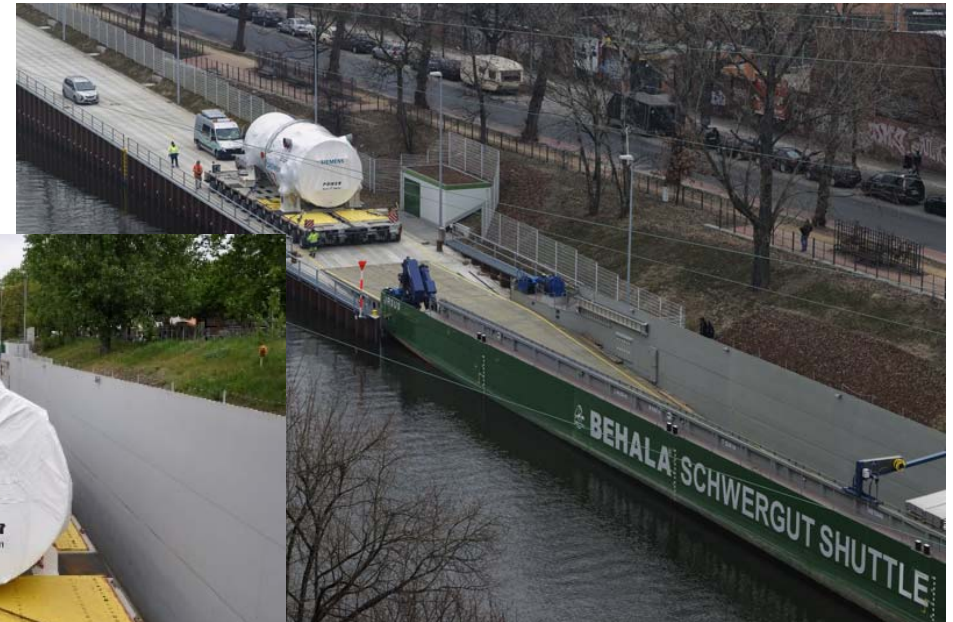
Heavy Cargo RoRo-Barge „URSUS“

length 64.50 m / width 9.50 m

displacement 1,400 t / draught 1.30 m – 3.06 m

Ramp

length 265 m



Layout - Requirements and constraints – local and global emission-free

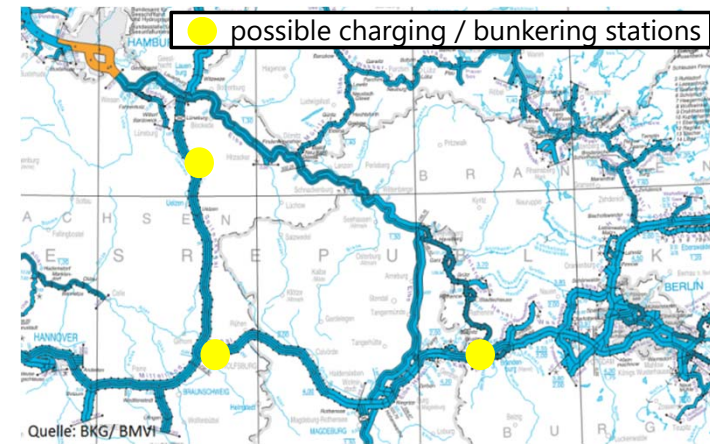


Regional operation



- Max. push load of 1.400 t
- Approx. range of 65 km/d
- Area of operation: zone 4
- Operational time of 8 h daily
- Average speed 8 km/h, up to 10 km/h
- Drive: battery

Supra-regional operation



- Berlin ↔ Hamburg
- Max. push load of 1.400 t
- Approx. range of 100 km/d
- Area of operation: zone 3+4 (exc. Rhine)
- Operation time of 16 h daily
- Average Speed 8.5 km/h, min. 10 km/h
- Drive: hybrid electric (FC/accumulator)

Layout - Push Boat



Main dimensions

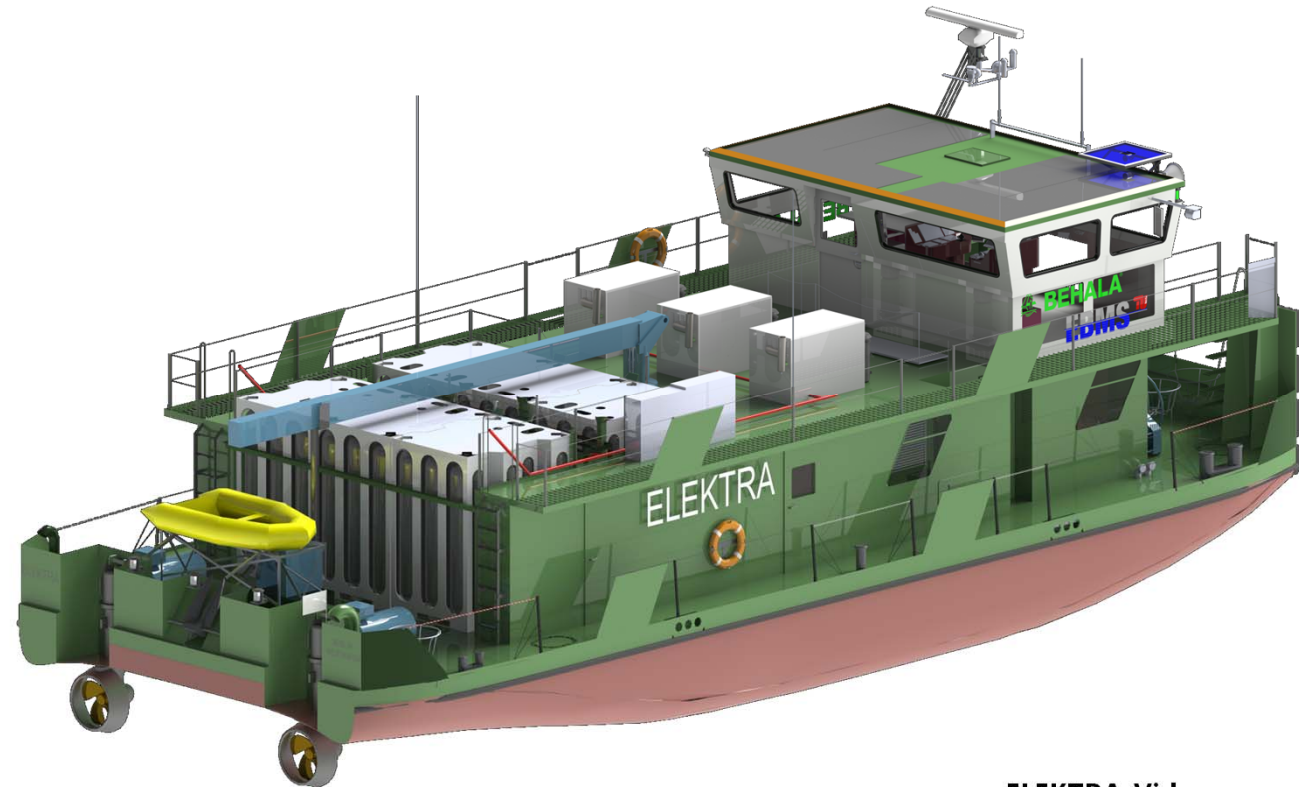
- length 20.00 m
- width 8.25 m
- draught 1.28 m
- displacement appr. 140 t

Operation

- Range total at 1.400 t pushload appr. 400 km
- Batterie-electric 8 h / 65 km
- Hybrid-electric 16 h / 100 km

Powertrain

- power 2 x 210 kW



ELEKTRA-Video



Layout – Overview energy system



BEHALA
• Owner

ANLEG

- Hydrogensystem
- H2-MEGC (Multiple-Energy Gas Container)
6 x 125 kg at 500 bar

Drive engines
2 x 210 kW

BALLARD

Fuell Cells
3 x 100 kW

Photovoltaics
1,6 kWp



• Shipbuilding



- Main Switchboards
- Energy Automation
- DC-/AC-Shoreconnection

EDMS TU

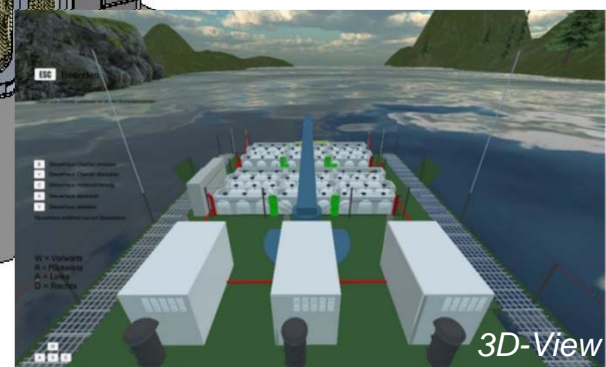
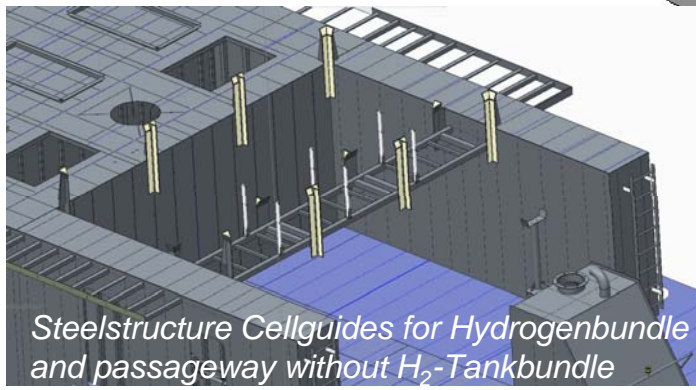
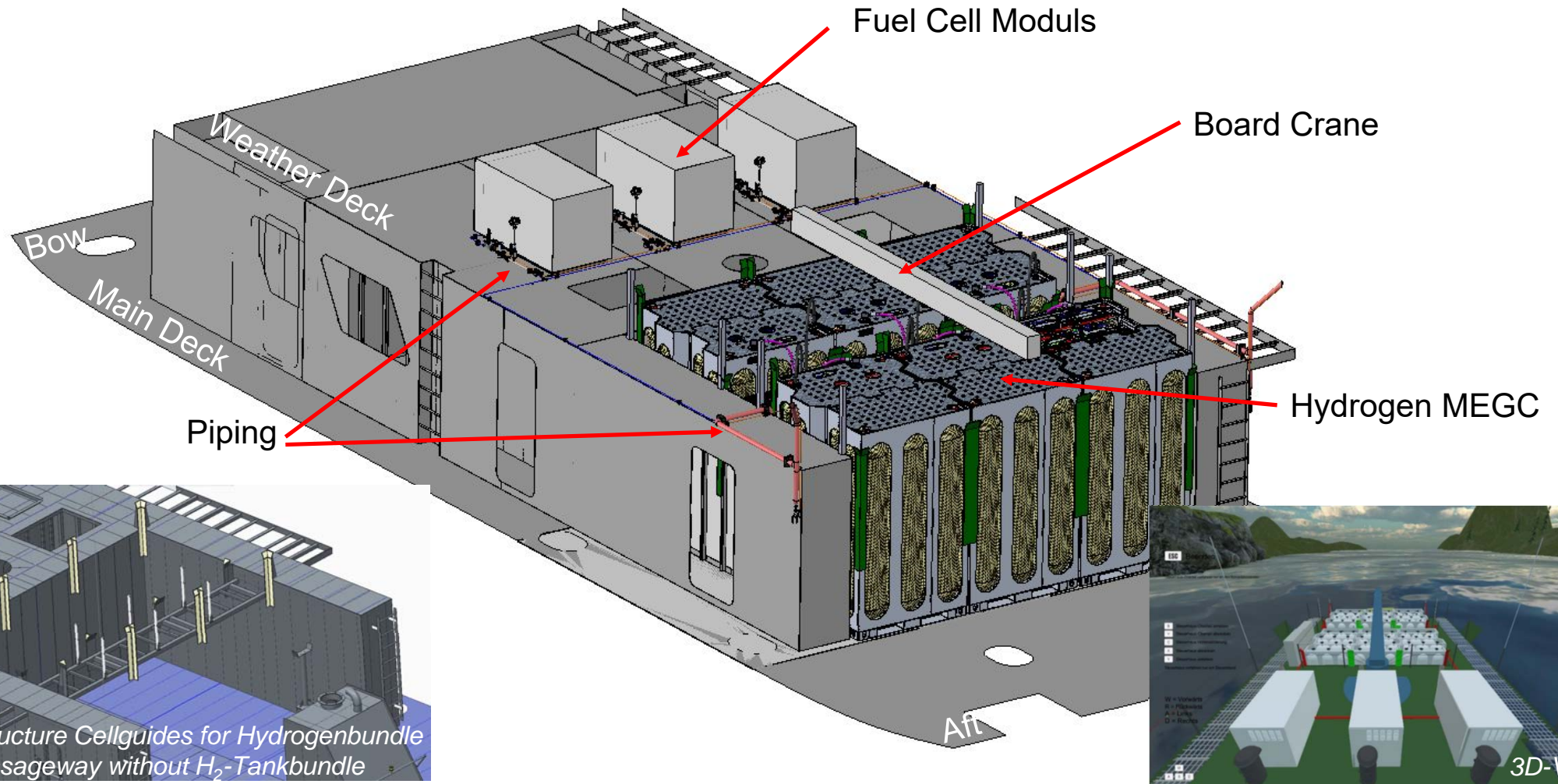
- Design of Ship and Energy System
- Project Management

EST-Floattech
Intelligent Energy Storage Solutions
Accumulator
• Drive 2 x 1.160 kWh
• Bordpower 2 x 116 kWh

Layout - Impressions of the Newbuilding March 2021



Layout – Hydrogen System - Overview

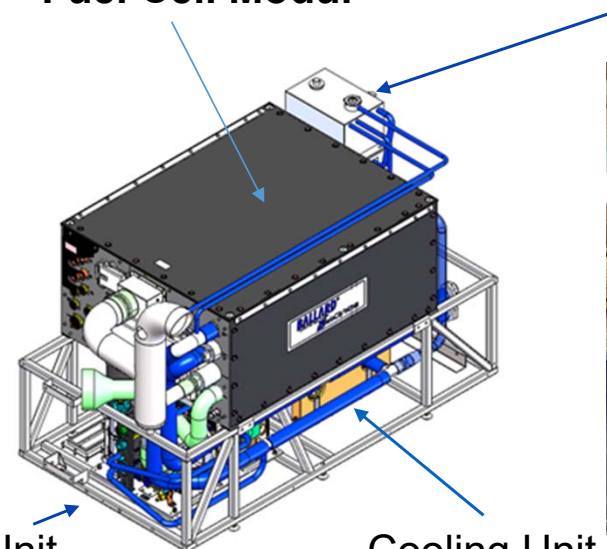


Layout – Hydrogen System - Fuel Cells



Fuell Cell Units at the weather deck

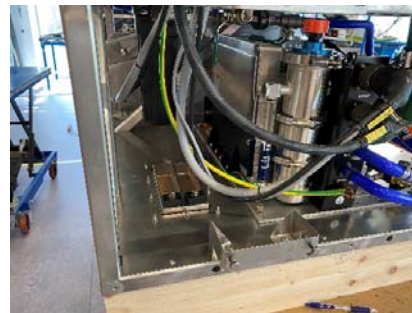
Fuel Cell Modul



Heatexchanger with pressurevessel



Compressor Unit



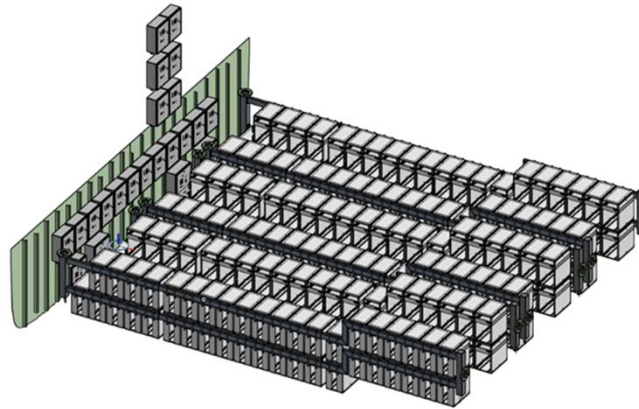
Cooling Unit



Layout – Accumulatorroom / Main-Switchbordroom



DC-Main Switchbord



Accu Arrangement



Accu Unit



Battery Control Units (part)

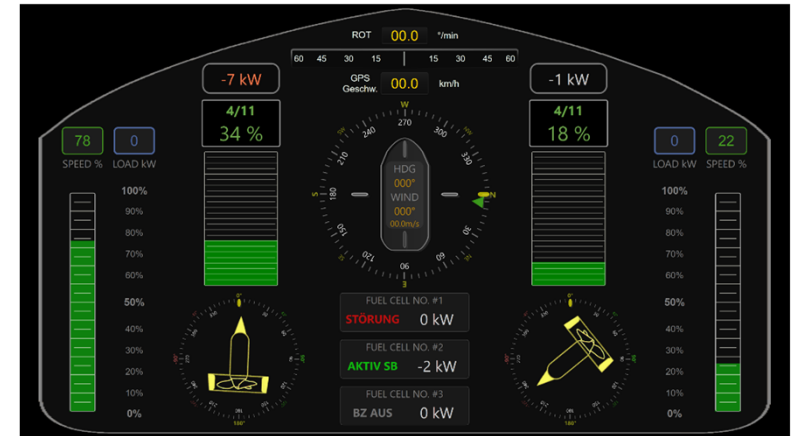


View to the Accu room (part)

Layout – Overview Wheelhouseconcept



3D-Mockup



Main Energy-Display

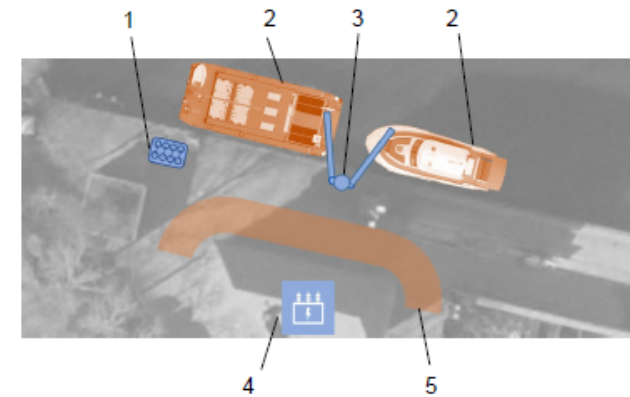


Mockup during Validation

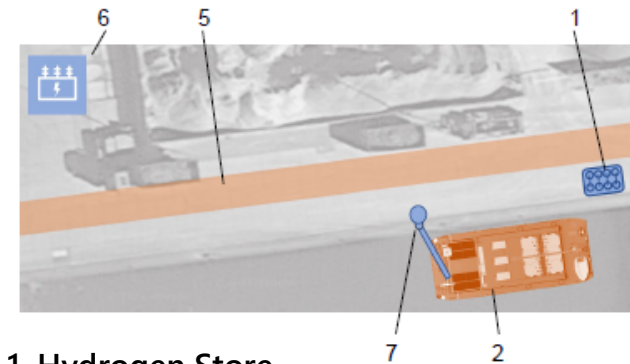
Supply of Hydrogen and Electric Energy



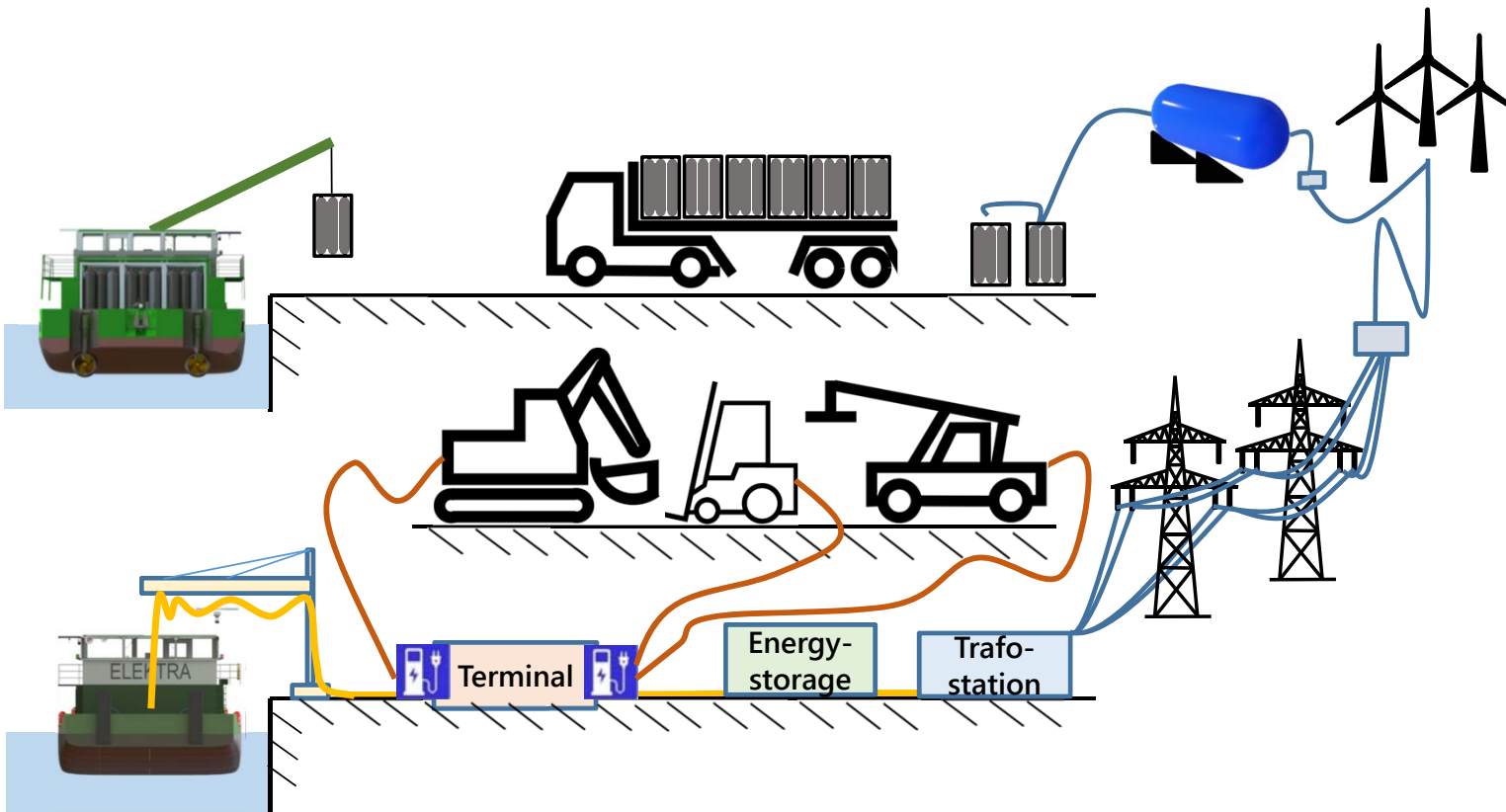
Westhafen Berlin



Hafen Lüneburg



1. Hydrogen Store
3. * Powerlock 400 V_{AC}, 660 A
 * DC 2x Marechal 640 V_{DC} up to 360 A
 * CEE 400 V_{AC} 125/63/(32/16) A



Summary



- 1. Local zero-emission transport in metropolitan areas and longdistance transport is today possible**
- 2. Building of an inland waterway vessel only powered by fuel cells and batteries is possible**
- 3. Further work has to be done regarding the implemenation of low energy heating as the standard construction in ships**
- 4. ship concepts have to take into account the space that is needed to install amount of batteries and or hydrogen tanks**
- 5. Rules and regulations for reliable investments are necessary**
- 6. ELEKTRA is a blueprint for Inland Water and Coastal Shipping**



BEHALA

HGK
SHIPPING



Schiffswerft
HERMANN

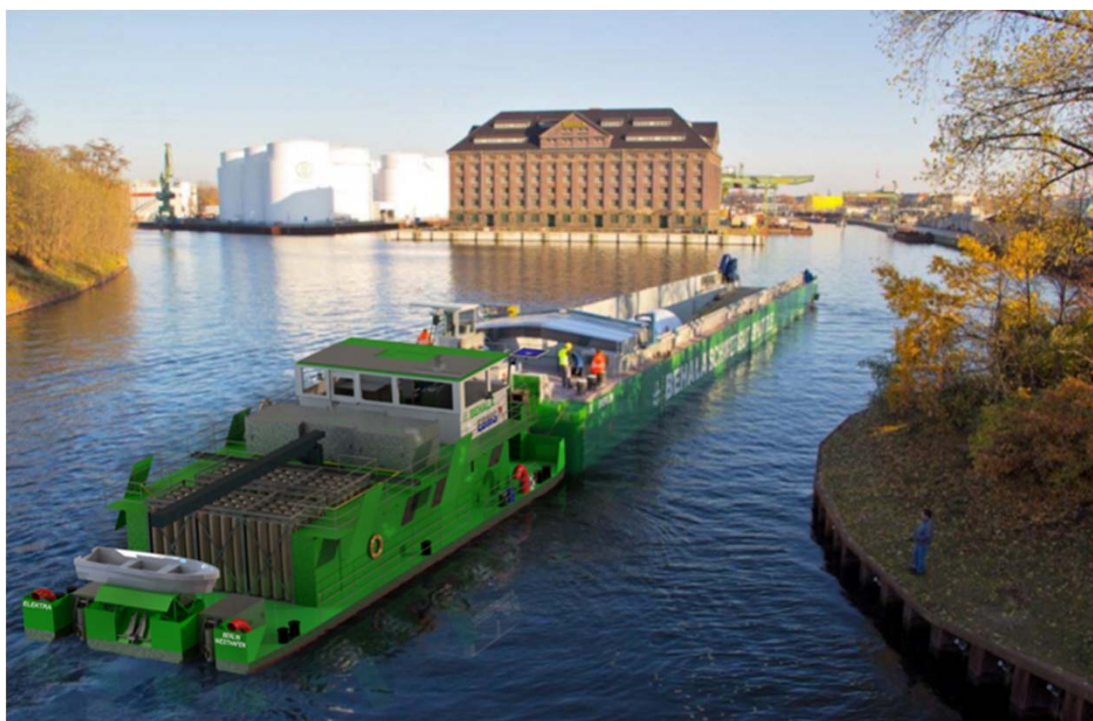


EST-Floattech
Intelligent Energy Storage Solutions

BALLARD

ANLEG

EBMS TU



The ELEKTRA with the heavy cargo barge URSUS in front of the Berlin Westhafen port in 2021

Technische Universität Berlin Design and Operation of Maritime Systems

Secretariat SG 6, Building SG 1
Salzufer 17-19
10587 Berlin

<http://www.marsys.tu-berlin.de>

Contact:

Prof. Dr.-Ing. Gerd Holbach

T: +49 (0) 30 314 214 17

E: gerd.holbach@tu-berlin.de

ELEKTRA-Video

