

Development of the RIS Index

Róbert Rafael

18th October 2011

CCNR RIS Workshop

Brussels

Agenda

- RIS / key technologies
- The RIS Index
- The ISRS location code
- Interoperability
- RIS Index Encoding Guide
- Conclusion

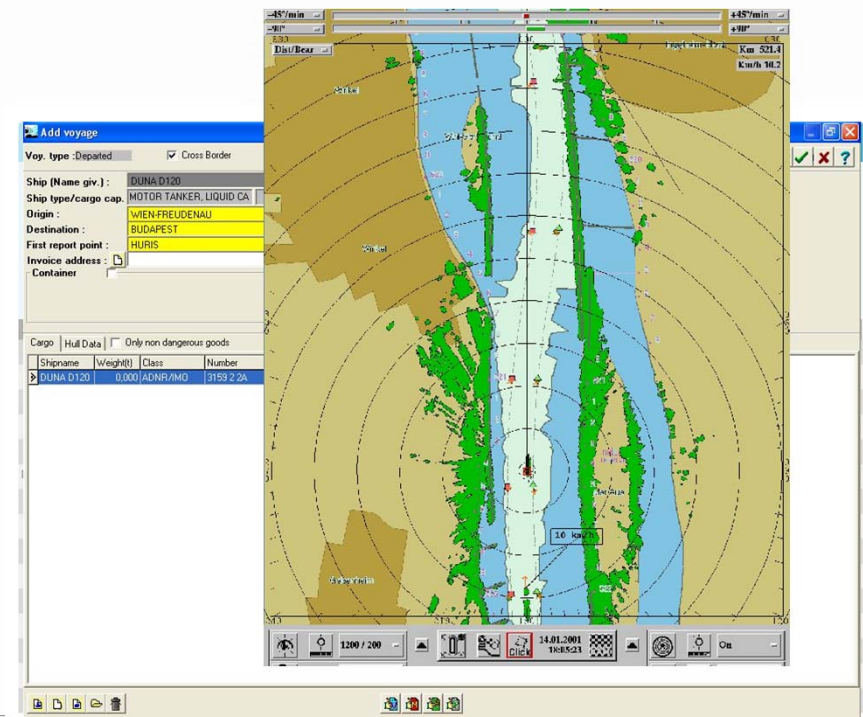
RSOE Introduction

- Established in 1982
- Wide range of activities
- Hungarian RIS Provider
- Involved in several IWT- and RIS-related projects



Key technologies / Expert Groups

- Vessel tracking and tracing
- Notices to Skippers
- Electronic reporting
- Inland ECDIS



The RIS Index...

- provides location codes for the RIS key technologies
- is encoded nationally according to the RIS Index Encoding Guide
- offers a unique code for objects influencing the safety of navigation

The RIS Index...


Official ISRS and Index data

Country code (ISO-alpha 2)	UN Location code (3 digits, letters only)	Waterway section (5 digits numerical)	Terminal code (5 digits alphanumeric)	Hectometer (5 digits numerical)	ISRS	Function	Object name	Location name	Waterway name	Route name	related ISRS
M	M	M	M	M	auto	M	C	O	M	O	O
CountryCode	UNLOCODE	FW_CODE	OBJECT_CODE	HECTOM	CountryCodeUNLOCODEFW_CODE	Functie	ObjectName2	Location_Name	FairwayName	RouteName	Related_ISRS
AT	ASC	00001	BERT1	21597	ATASC00001BERT121597	berths_1	Lände Garant Tiernahrung	Aschach	Donau		
AT	ASC	00001	BERTH	21601	ATASC00001BERTH21601	berths_3	Untere Wartelände Unterwasser Aschach	Aschach	Donau		
AT	ASC	00001	BERTH	21604	ATASC00001BERTH21604	berths_3	Fahrgastlände Land Oberösterreich	Aschach	Donau		
AT	ASC	00001	BERTH	21614	ATASC00001BERTH21614	berths_3	Lände Bundeswasserstraßenverwaltung	Aschach	Donau		
AT	ASC	00001	BERTH	21619	ATASC00001BERTH21619	berths_3	Obere Wartelände Unterwasser Aschach	Aschach	Donau		
AT	ASC	00001	BERTH	21632	ATASC00001BERTH21632	berths_3	Wartelände Oberwasser Aschach für Selbstfahrn	Aschach	Donau		
											48.3785 14.0271
											48.3886 14.0172




ISRS and Index data

Country code (ISO-alpha 2)	UN Location code (3 digits, letters only)	Waterway section (5 digits numerical)	Terminal code (5 digits alphanumeric)	Hectometer (5 digits numerical)	ISRS	Function	Object name	Location name	Waterway name	Route name	related ISRS
M	M	M	M	M	auto	M	C	O	M	O	O
CountryCode	UNLOCODE	FW_CODE	OBJECT_CODE	HECTOM	CountryCodeUNLOCODEFW_CODE	Functie	ObjectName2	Location_Name	FairwayName	RouteName	Related_ISRS
SK	BAB	00001	BRIDG	18811	SKBAB00001BRIDG18811	brgare_1	Novy most - Bratislava	Bratislava Port	Dunaj		
SK	BAB	00001	G0302	18818	SKBAB00001G030218818	wtwgag	Vodomerka stanica Bratislava	Bratislava Port	Dunaj		
SK	BAB	00001	BAPAS	18816	SKBAB00001BAPAS18816	hrbare	Osobny pristan Bratislava	Bratislava Port	Dunaj		
SK	BAB	00001	BRIDG	18811	SKBAB00001BRIDG18811	brgare_1	Stary most - Bratislava	Bratislava Port	Dunaj		
SK	BAB	00001	BRDGI	18811	SKBAB00001BRDGI18811	bridge_1	Stary most - Bratislava - protiprudy mostny otvor	Bratislava Port	Dunaj		SKBAB00001



Official ISRS and Index data

Country code (ISO-alpha 2)	UN Location code (3 digits, letters only)	Waterway section (5 digits numerical)	Terminal code (5 digits alphanumeric)	Hectometer (5 digits numerical)	ISRS	Function	Object name	Location name	Waterway name	Route name	related ISRS
M	M	M	M	M	auto	M	C	O	M	O	O
CountryCode	UNLOCODE	FW_CODE	OBJECT_CODE	HECTOM	CountryCodeUNLOCODEFW_CODE	Functie	ObjectName2	Location_Name	FairwayName	RouteName	Related_ISRS
HU	BUD	00001	BRIDG	16453	HUBUD00001BRIDG16453	brgare_1	Szabadság híd	Budapest	Duna		
HU	BUD	00001	BRIDG	16443	HUBUD00001BRIDG16443	brgare_1	Petőfi híd	Budapest	Duna		
HU	BUD	00001	BRIDG	16432	HUBUD00001BRIDG16432	brgare_1	Lágymányosi híd	Budapest	Duna		
HU	BUD	00001	BRIDG	16432	HUBUD00001BRIDG16432	brgare_1	Déli híd	Budapest	Duna		
HU	CPE	00002	CSEPL	16397	HUCPE00002CSEPL16397	hrbare_C	Csepeli kikötő	Csepel	Duna		



View Edit Revisions

RIS Index












ROBERT RAFAEL

7:29pm Apr 15, 2010

Tagged: Reference Data

Highlight changes

Preview	Attachment	Size
	Austria	840.93 KB
	Belgium	303.79 KB
	Czech_Rep	784.89 KB
	France_locks	4.45 MB
	Germany	433.17 KB
	Hungary	813.3 KB
	Netherlands	3.53 MB
	Romania	652.5 KB
	Slovakia	588.5 KB

LIBRARY

GLOSSARY
 LINKS
 LEGISLATION
 EU PROJECTS EXECUTED
 PUBLICATIONS
 EXPERT GROUPS
 ECDIS
 ERI
 NTS
 GENERAL NTS
 REFERENCE DATA
 GUIDES
 OTHER
 NTS VERSION 1X
 NTS VERSION 2.0
 NTS VERSION 3.0
 MEETINGS
 VTT
 JTF
 COUNTRIES

REFERENCE DATA

library > expert groups > nts > reference data

- General template
- as well as the RIS Index of
- Austria
 - Belgium
 - France
 - Germany
 - Hungary
 - the Netherlands
 - Slovakia
 - Roumania

Available downloads:

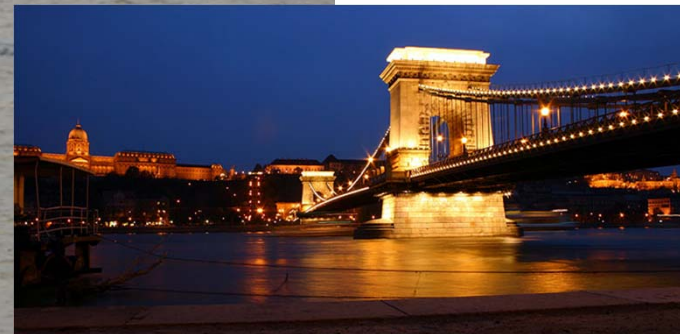
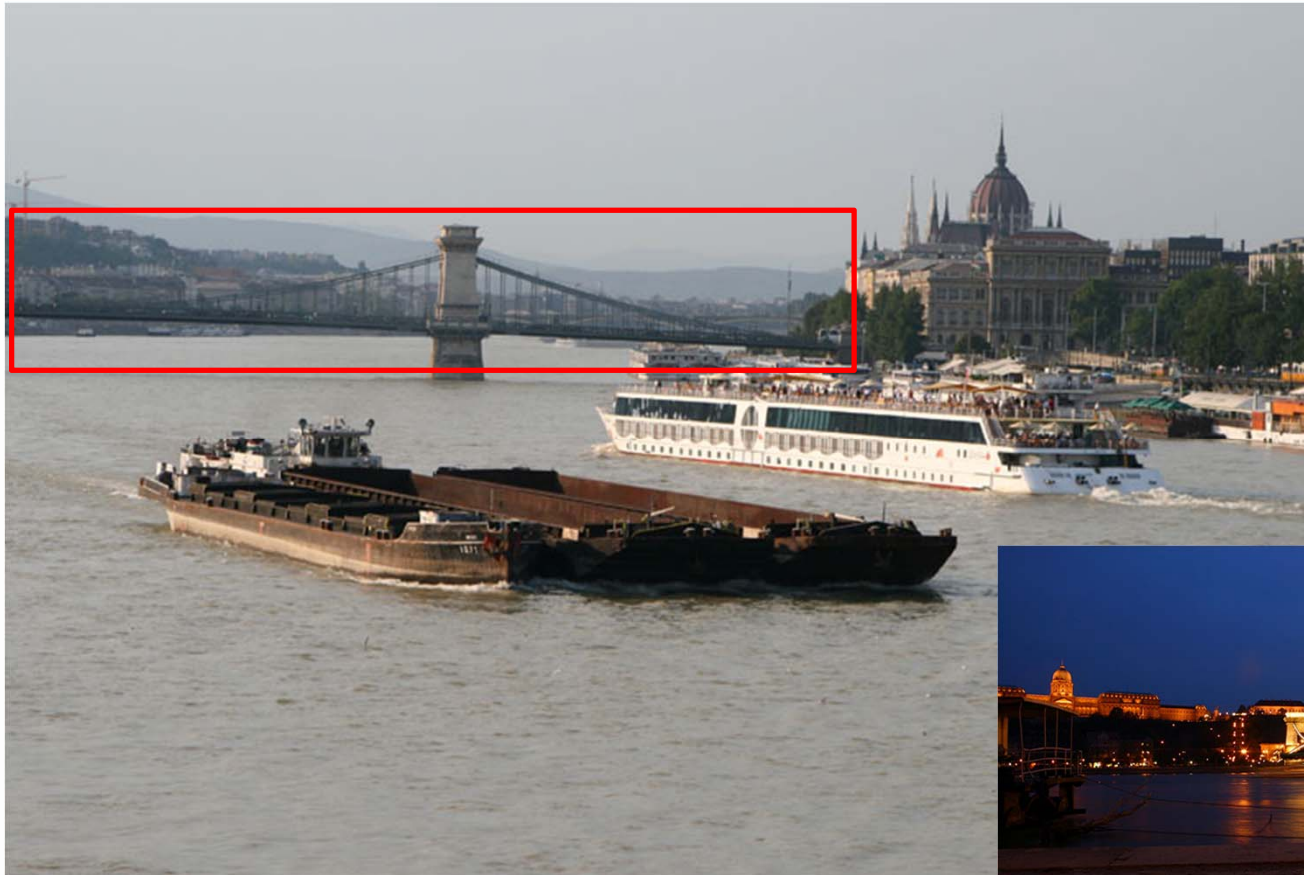
-  [Ris index roumania](#)
XLS: 652.5 KB
-  [Ris index slovakia](#)
XLS: 589 KB
-  [Template reference documentation](#)
ZIP: 773.49 KB
-  [Risindex austria](#)
ZIP: 840.93 KB
-  [Risindex belgium](#)
ZIP: 303.79 KB
-  [Risindex czechrepublic](#)
ZIP: 784.89 KB
-  [Ris index france](#)
XLS: 4.45 MB
-  [Ris index germany](#)
ZIP: 433.17 KB
-  [Ris index netherlands](#)
ZIP: 3.53 MB
-  [Ris index hungary](#)
ZIP: 813.3 KB

The ISRS location code...

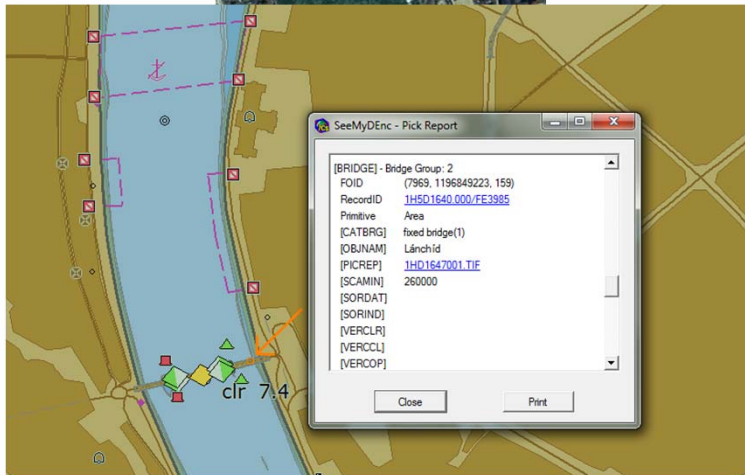
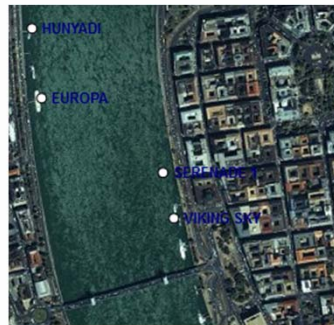
HUBUD00001BRIDG16470

- Country code (2)
- UN location code (3)
- Fairway section code (5)
- Terminal code / *Object reference code* (5)
 - Fairway hectometer (5)

The object itself...



Interoperability...



Országos Vízeljáró Szolgálat
Hydroinfo

ismertető nyomtatási kép (folyónkénti sorrend) nyomtatási kép (hidrológiai sorrend)

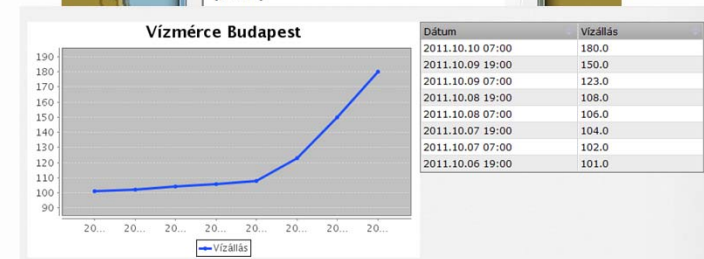
Hidrológiai adatok

Folyónkénti sorrend Hidrológiai sorrend

Hidrológiai adatok									
Észlelés: 2011. augusztus 26.									
Állomáskód	Állomásnév	Folyónév	Vízállás [cm]		Változás 24 óra alatt [cm]		Vízhozam [m3/s]	Víz-hőmérséklet [°C]	Jégállapot
			tegnap reggel	ma este	reggel	alatt			
442025	Esztergom	Duna	145	//	129	-16	//	22,9	//
142310	Párkány	Duna	143	137	129	-14	1730	23,3	//
442625	Szob	Duna	64	62	51	-13	//	22,5	//
442527	Nagymaros	Duna	81	81	72	-9	1700	22,9	//
442026	Vác	Duna	96	98	91	-5	1260	22,8	//
442027	Budapest	Duna	194	200	196	2	1730	20,3	//
442532	Bp.Kvassay-zsilip f.	Duna	171	177	173	2	//	20,3	//

Pick report at position: 47 29.76 N 019 02.90 E

[sistaw] - Signal station, warning Group: 2
FOID (7969, 1196849226, 229)
RecordID [1H5D1640_000/FE4820](#)
Primitive Point
[INFORM] GZP: 94.98 (Batic), LDC: 92, MW: 287, HDC: 668
[OBJNAM] Budapest
[SCAMIN] 120000
[SORDAT]
[SORIND]



RIS Index Encoding Guide (1/3)

- Revision and update of the former version
- Joint Task Force established:
 - unambiguous encoding guide for the ISRS location code
 - elaborate a proposal for the unambiguous encoding of waterway networks
 - provide a proposal based on the RIS Index for a revision of the Annex I of Directive 2005/44/EC

RIS Index Encoding Guide (2/3)

- bridge
- lock basin
- lock basin part
- exceptional navigational structure
- turning basin
- harbour basin
- harbour area
- port area
- berth without transshipment
- transshipment berth
- anchorage area
- anchorage berth
- terminal
- waterway gauge
- passage points
- traffic points
- bridge area
- lock area
- overhead cable
- overhead pipe
- radio calling point

proposed to include three more objects in the list:

- junctions
- distance mark along fairway axis
- RIS centre

RIS Index Encoding Guide (3/3)

- Status quo

- Version 0p91 presented during the NtS Expert Group meeting in June
- Feedback gathered
- Merkblatt of the CCNR on the RIS Index

- Next steps

- Consolidation of inputs
- Discussion on open issues
- Next meeting: 3rd November 2011, Koblenz
- Presentation of results planned on 15th November 2011, NtS EG meeting

Conclusion

- Precondition for safe and interoperable RIS services: **unambiguous RIS reference data**
- **ISRS location codes** ensuring one-to-one connection for governmental and logistics users
- Encoding of **European fairway network** is of high importance

Thank you for your attention!

Róbert Rafael
robert.rafael@rsoe.hu