



**The European Union's TEN-T programme  
supporting ...**

# **IRIS Europe II – Implementation of River Information Services in Europe**



**This project is co-funded by the European  
Commission / DG-TREN / TEN-T**



**A project implemented by  
the IRIS Europe Consortium**



# Experiences and developments resulting from the project IRIS Europe II

Róbert Rafael on behalf of the PMT  
CCNR RIS Workshop  
18.10.2011, Brussels



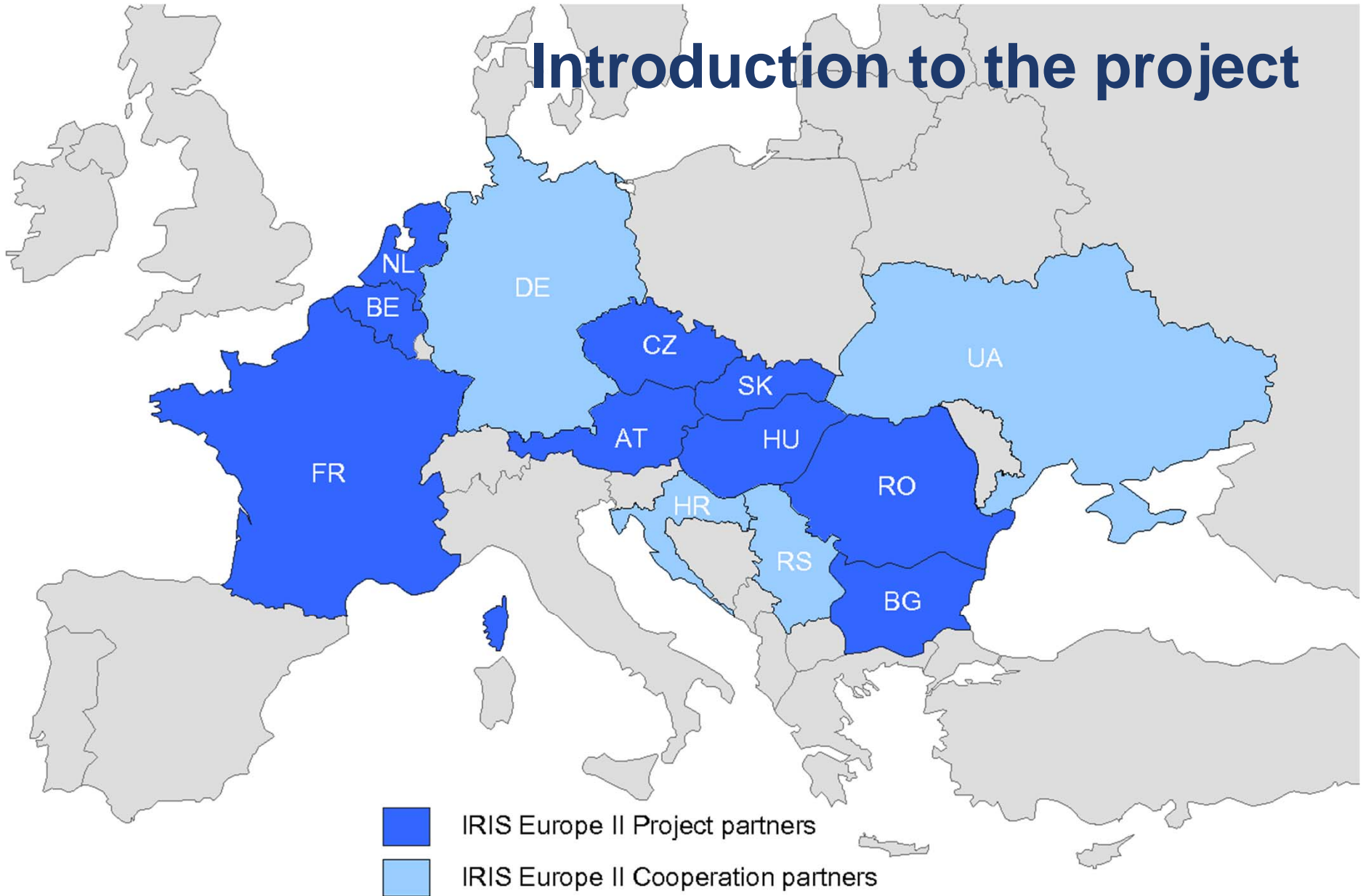
Implementation of  
River Information Services in Europe

# Agenda

- **Introduction** – facts and figures
- **Developments** – key results
- **Summary & Outlook**



# Introduction to the project



# Objectives – IRIS Europe II

## Motivation:

- **Support** RIS providers, traffic and waterway authorities in **enhancing** their **RIS Services**, including the provision of interfaces especially for **logistical RIS Users**.

**Duration:** 01/2009 – 12/2011

## Objectives:

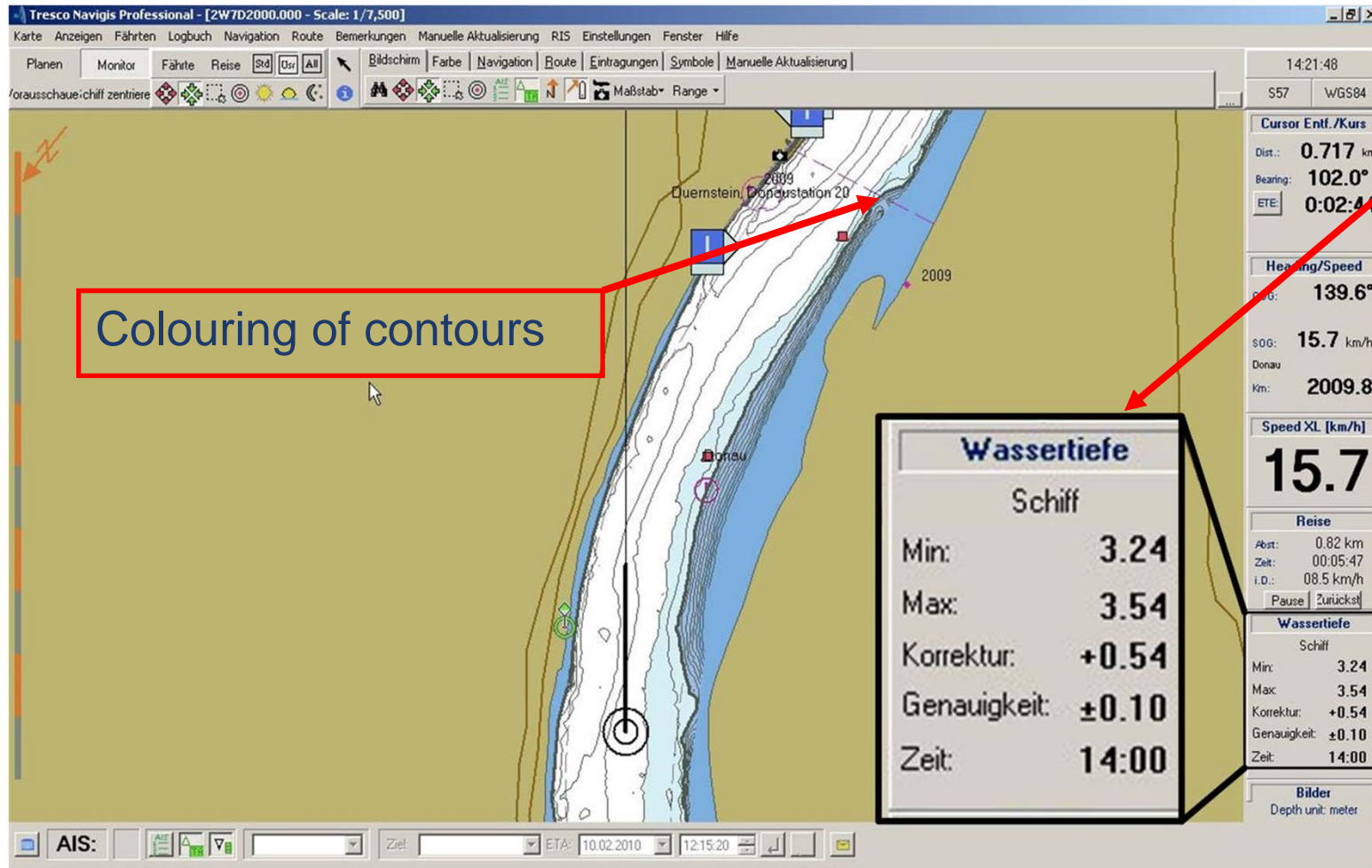
- Common definition and adaptation of RIS standards within RIS Expert groups, based on pilot implementation experience
- Evaluation of new RIS technologies
- Demonstration and evaluation of additional RIS services
- Further elaboration and implementation of measures for cross-border exchange of RIS data
- Definition of requirements for operation of RIS in order to guarantee Quality of Information Services to all RIS users

# Thematic Areas / Activities

- Activity 1:** Pilot implementation of selected Fairway Information Services
- Activity 2:** Pilot implementation Traffic and Transport Related RIS Services
- Activity 3:** Pilot Implementation of Technical and Administrative Agreement
- Activity 4:** Harmonization of Quality of Information Services for RIS
- Activity 5:** Project Management



# Development – key results



# Development – key results

## Fairway Information Services

- Notices to Skippers

The screenshot displays the RISNTS (River Information System for Navigation) website interface. It includes a search bar for waterway and vessel-related news, a map of the Danube basin with various navigation points, a list of notices with columns for identification, date, and status, and a graph showing water levels at Nagybjacs over time.

Identifikation	Wasserstandsbericht	Herausgeber	Gültig von	Gültig bis
142 / 00 / 2011, Nachricht: Statistikmeldungen	Donau	12.03.2011	12.03.2011	31.12.2011
141 / 00 / 2011, Nachricht: Ende der Berechtigung mobil	Donau	12.03.2011	12.03.2011	31.12.2011
140 / 00 / 2011, Nachricht: Revision der linken Kammer der Schleuse Kufstein	Donau	12.03.2011	12.03.2011	31.12.2011
139 / 00 / 2011, Notice: Sperrung Schleuse Hohenhausen	Donau	12.03.2011	12.03.2011	31.12.2011
138 / 00 / 2011, Notice: Sperrung Schleuse Hohenhausen	Donau	12.03.2011	12.03.2011	31.12.2011
137 / 00 / 2011, Notice: Sperrung Schleuse Hohenhausen	Donau	12.03.2011	12.03.2011	31.12.2011
136 / 00 / 2011, Notice: Sperrung Schleuse Hohenhausen	Donau	12.03.2011	12.03.2011	31.12.2011
135 / 00 / 2011, Notice: Sperrung Schleuse Hohenhausen	Donau	12.03.2011	12.03.2011	31.12.2011
134 / 00 / 2011, Notice: Sperrung Schleuse Hohenhausen	Donau	12.03.2011	12.03.2011	31.12.2011
133 / 00 / 2011, Notice: Sperrung Schleuse Hohenhausen	Donau	12.03.2011	12.03.2011	31.12.2011
132 / 00 / 2011, Notice: Sperrung Schleuse Hohenhausen	Donau	12.03.2011	12.03.2011	31.12.2011
131 / 00 / 2011, Notice: Sperrung Schleuse Hohenhausen	Donau	12.03.2011	12.03.2011	31.12.2011
130 / 00 / 2011, Notice: Sperrung Schleuse Hohenhausen	Donau	12.03.2011	12.03.2011	31.12.2011
129 / 00 / 2011, Notice: Sperrung Schleuse Hohenhausen	Donau	12.03.2011	12.03.2011	31.12.2011
128 / 00 / 2011, Notice: Sperrung Schleuse Hohenhausen	Donau	12.03.2011	12.03.2011	31.12.2011
127 / 00 / 2011, Notice: Sperrung Schleuse Hohenhausen	Donau	12.03.2011	12.03.2011	31.12.2011
126 / 00 / 2011, Notice: Sperrung Schleuse Hohenhausen	Donau	12.03.2011	12.03.2011	31.12.2011
125 / 00 / 2011, Notice: Sperrung Schleuse Hohenhausen	Donau	12.03.2011	12.03.2011	31.12.2011
124 / 00 / 2011, Notice: Sperrung Schleuse Hohenhausen	Donau	12.03.2011	12.03.2011	31.12.2011
123 / 00 / 2011, Notice: Sperrung Schleuse Hohenhausen	Donau	12.03.2011	12.03.2011	31.12.2011
122 / 00 / 2011, Notice: Sperrung Schleuse Hohenhausen	Donau	12.03.2011	12.03.2011	31.12.2011
121 / 00 / 2011, Notice: Sperrung Schleuse Hohenhausen	Donau	12.03.2011	12.03.2011	31.12.2011
120 / 00 / 2011, Notice: Sperrung Schleuse Hohenhausen	Donau	12.03.2011	12.03.2011	31.12.2011
119 / 00 / 2011, Notice: Sperrung Schleuse Hohenhausen	Donau	12.03.2011	12.03.2011	31.12.2011
118 / 00 / 2011, Notice: Sperrung Schleuse Hohenhausen	Donau	12.03.2011	12.03.2011	31.12.2011
117 / 00 / 2011, Notice: Sperrung Schleuse Hohenhausen	Donau	12.03.2011	12.03.2011	31.12.2011
116 / 00 / 2011, Notice: Sperrung Schleuse Hohenhausen	Donau	12.03.2011	12.03.2011	31.12.2011
115 / 00 / 2011, Notice: Sperrung Schleuse Hohenhausen	Donau	12.03.2011	12.03.2011	31.12.2011
114 / 00 / 2011, Notice: Sperrung Schleuse Hohenhausen	Donau	12.03.2011	12.03.2011	31.12.2011
113 / 00 / 2011, Notice: Sperrung Schleuse Hohenhausen	Donau	12.03.2011	12.03.2011	31.12.2011
112 / 00 / 2011, Notice: Sperrung Schleuse Hohenhausen	Donau	12.03.2011	12.03.2011	31.12.2011
111 / 00 / 2011, Notice: Sperrung Schleuse Hohenhausen	Donau	12.03.2011	12.03.2011	31.12.2011
110 / 00 / 2011, Notice: Sperrung Schleuse Hohenhausen	Donau	12.03.2011	12.03.2011	31.12.2011
109 / 00 / 2011, Notice: Sperrung Schleuse Hohenhausen	Donau	12.03.2011	12.03.2011	31.12.2011
108 / 00 / 2011, Notice: Sperrung Schleuse Hohenhausen	Donau	12.03.2011	12.03.2011	31.12.2011
107 / 00 / 2011, Notice: Sperrung Schleuse Hohenhausen	Donau	12.03.2011	12.03.2011	31.12.2011
106 / 00 / 2011, Notice: Sperrung Schleuse Hohenhausen	Donau	12.03.2011	12.03.2011	31.12.2011
105 / 00 / 2011, Notice: Sperrung Schleuse Hohenhausen	Donau	12.03.2011	12.03.2011	31.12.2011
104 / 00 / 2011, Notice: Sperrung Schleuse Hohenhausen	Donau	12.03.2011	12.03.2011	31.12.2011
103 / 00 / 2011, Notice: Sperrung Schleuse Hohenhausen	Donau	12.03.2011	12.03.2011	31.12.2011
102 / 00 / 2011, Notice: Sperrung Schleuse Hohenhausen	Donau	12.03.2011	12.03.2011	31.12.2011
101 / 00 / 2011, Notice: Sperrung Schleuse Hohenhausen	Donau	12.03.2011	12.03.2011	31.12.2011
100 / 00 / 2011, Notice: Sperrung Schleuse Hohenhausen	Donau	12.03.2011	12.03.2011	31.12.2011



# Development – key results

## Fairway Information Services

- Wireless RIS services



# Development – key results

## Fairway Information Services

- National reference data management systems

The screenshot displays the RISNTS web application interface. On the left, a diagram shows a cylinder labeled 'IENC data base' connected to a map. The main content area shows a document titled 'RIS Index' by 'ROBERT RAFAEL', dated '7:29pm Apr 15, 2010', with a 'Tagged: Reference Data' label and a 'Highlight changes' button. Below this is a table of attachments:

Preview	Attachment	Size
	Austria	840.93 KB
	Belgium	303.79 KB
	Czech_Rep	784.89 KB
	France_locks	4.45 MB
	Germany	433.17 KB
	Hungary	813.3 KB
	Netherlands	3.53 MB
	Romania	652.5 KB
	Slovakia	588.5 KB

On the right, the 'REFERENCE DATA' section lists countries: Austria, Belgium, France, Germany, Hungary, the Netherlands, Slovakia, and Roumania. Below this is an 'Available downloads' section listing various file formats and sizes for each country, such as 'Ris index romania XLS: 652.5 KB' and 'Ris index slovakia XLS: 589 KB'.

# Development – key results

## Traffic and Transport Related RIS Services

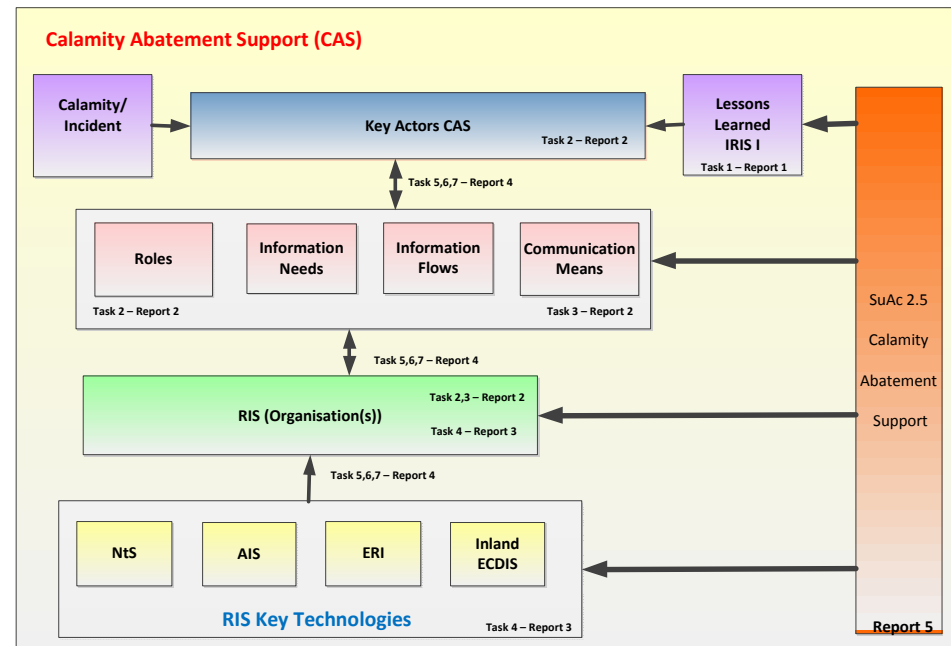
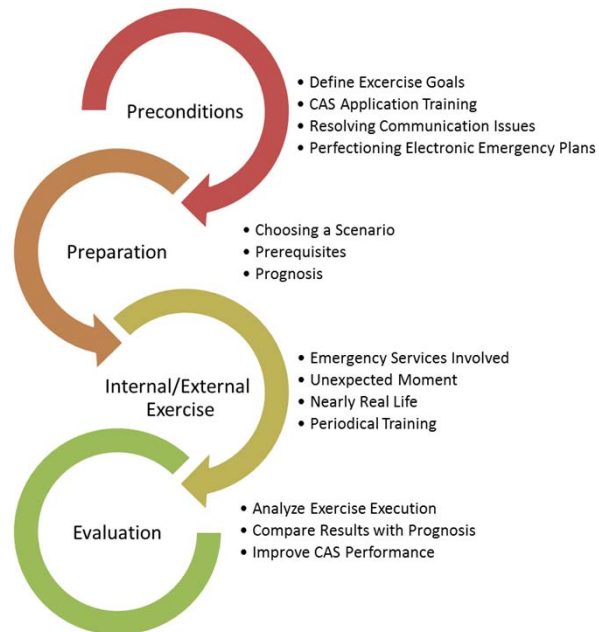
- Evaluation of heading devices
- Pilot infrastructures on-shore
- Pilot infrastructure on-board



# Development – key results

## Traffic and Transport Related RIS Services

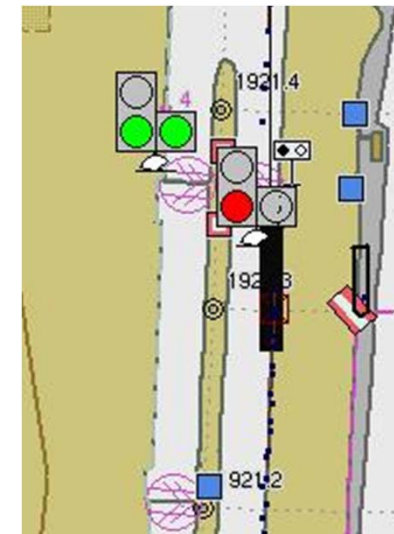
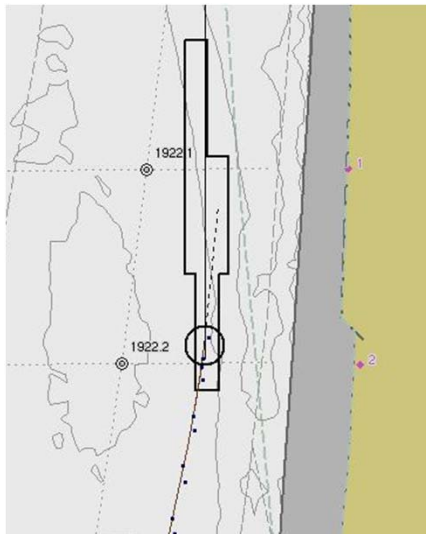
- Calamity Abatement Support



# Development – key results

## Traffic and Transport Related RIS Services

- Traffic information





# Development – key results

## Traffic and Transport Related RIS Services

- Electronic reporting (according to 164/2010/EU regulation)
- Single Sign On

**Crewlijster - VERTREK**

Scheeps Informatie  
Schipnaam : PAXTEST  
Nr. Callsign : 03999998  
Nationaliteit : NEDERLAND

Route Informatie  
Herkomst : KOBLENZ AM RHEIN  
Bestemming : NIMEGEN  
10-05-2011  
10-05-2011  
Crew: 18 Pax: 23  
Extra Ontvangers: 0

Bemanningslijst			Passagierlijst				Verstekelingenlijst		
Nr	Achternaam	Voornaam	Prefix	Nationaliteit	Geboortedatum	Geboorteplaats	Soort ID	Nummer Identiteit	Woonadres
1	Scherpbier	Linda		NEDERLAND	18-05-1978	katwijk	Ribewijs	1234	
2	Dudenes	Peter		NEDERLAND	29-01-1971	Rotterdam	Ribewijs	RDM109234	
3	Bubbeman	Bart		SURINAME	29-06-1961	Paramaribo	Zeevaarboek	ZEE23823	

Toevoegen Wissen

**Personen bericht details (FAL 5.0)**

Nr.: 2044 Verrekeningdatum: 10-05-2011 15:58 Berichttype: PAXTEST 0 (OALINERFID)  
Aangemaakt: 10-05-2011 15:54 Bericht id: SVC110519541 Berichtcode: 201105195991

Zender: 90015289 Naam: Intouchage id: SVC110519541 Antwoord:  
Ontvanger: 11111112 Doc nr: SVC11051954122 Schip: 0399999 Schip nr: PASSENGER LIST Code: 745  
Toneel: 0 Schip: 0399999 Schip nr: PASSENGER LIST  
Toneel: 0 Nationaliteit: NEDERLAND Tramp deur / Other: Vast. tijd: 10-05-2011 (ETD)  
Herkomst: KOBLENZ AM RHEIN Bestemming: NIMEGEN Aank. tijd: passagierlijstnaam  
Bestemming: NIMEGEN Aank. tijd: passagierlijstnaam  
Route: KOBLENZ AM RHEIN

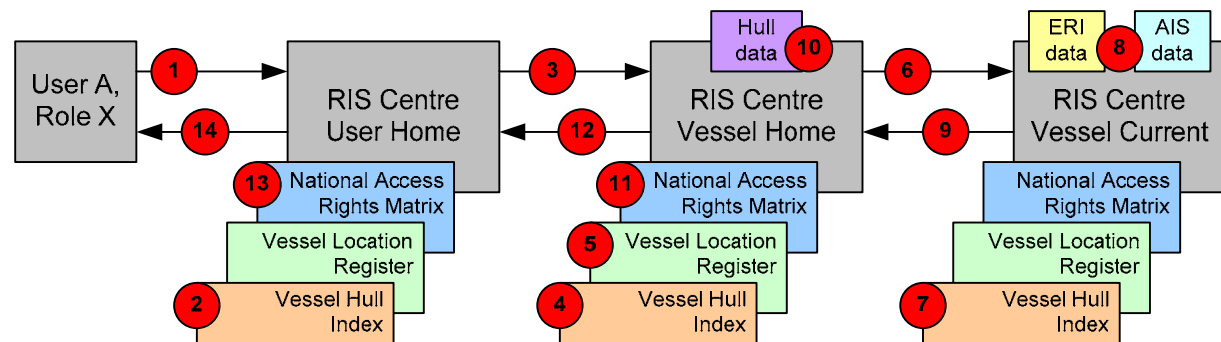
afgehandeld	afgehandeld	Type	Achternaam	Voornaam	prefix	Nationaliteit	Rang	geb. l.
		Passagier	DOEFENHUIS	LINDA		NL		
		Passagier	DOZENES	PETER		NL		
		Passagier	DOEFENHUIS	BART		SR		

Record: 1 van 3 Zieken

# Development – key results

## Pilot implementation of RIS data exchange

- Advanced services for international data exchange
- Advanced services resulting for maritime navigation, in particular seaports
- Legal provisions for international RIS data exchange
- Functional and technical provisions for the international RIS data exchange



# Development – key results

## Pilot implementation of RIS data exchange

- Interconnection with European Services

**European Reference Data Management Service – ERDMS**

**European Hull Database – EHDB**

**European Position Information Service – EPIS**

# Agreements in force/under preparation

	<b>„SAP-Solution“</b>	<b>Letter exchange for EHDB</b>	<b>Service Agreement for EHDB</b>	<b>Service Agreement for Traffic Mgmt.</b>
<b>Data</b>	ERI, VTT, Hull data	Hull data	Hull data	VTT in border areas, ERI
<b>Users</b>	RIS Authorities and logistics	Certification and RIS authorities**	Certification and RIS authorities	RIS Authorities
<b>Status</b>	in force until 31.12.2011	in force for 2 countries	in force for 7 countries	under finalization
<b>Valid after 1.1.2012</b>	No	No	Yes*	Yes

→ To do: data exchange with logistics after 1.1.2012

\*prolongation required for time after 1.6.2012

\*\* only for ENI assignment

# Development – key results

## Quality of Information Services for RIS

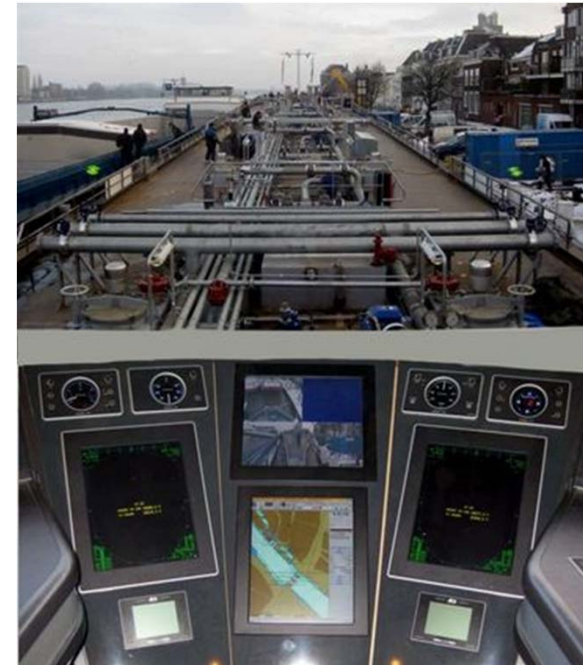
- QoIS for Electronic Reporting
- QoIS for Notices to Skippers
- QoIS for RIS Index
- QoIS for Vessel Tracking and Tracing





# Summary & Outlook (1/2)

- The joint initiative to harmonize and develop RIS services has led to a success
- The network of RIS experts is stable (RIS Expert Groups)
- IRIS Europe II is / was a project of national priorities managed on international level
- Tangible results are on the table of RIS stakeholders (governmental & private users)
- Co-ordinated further work is of utmost importance



# Summary & Outlook (2/2)

- IRIS Europe 3 proposal
  - Ensuring interoperability of RIS systems
  - Co-ordinated approach towards international data exchange
  - Interconnections with the European Services
- Cooperation with the non IRIS Europe 3 beneficiaries is established through cooperation agreements
- The cooperation agreements also ensure a consolidation and cooperation with parallel TEN-T initiatives (e.g. Vessel Traffic Management Centres of the Future)



**RISing**  
River Information Services for Transport & Logistics

**IRIS II**  
EUROPE



It's all about River Information Services...

**RISING** and **IRIS EUROPE II**,

two European projects will be presenting their results during a joint final event.

Join our RIS trip and experience what RIS can mean for you.

**FINAL EVENT**

1 December 2011 | Duisburg | 09.00 – 18.00

A unique event at a unique location

save the date

# Róbert Rafael on behalf of the PMT

**RSOE**

[robert.rafael@rsoe.hu](mailto:robert.rafael@rsoe.hu)

**Tel.: +36 20 330 3110**

**H-1089 Budapest, Elnök utca 1.**



© IRIS Europe II | 22



Project is co-funded by the European Union  
(EC / DG-TREN / TEN-T)