



Public berths in the Czech Republic

Lubomír Fojtů
Waterways Directorate of the Czech Republic



Orient – East Mediterranean corridor of the core TEN-T network

Defined by Directive of European Parliament and Council (EU) No 1316/2013 from 11/12/2013



**Orient
East Med**



Work Plan of the
European Coordinator
Mathieu Grosch

Strategic corridor bottlenecks:

- Unstable draughts on Elbe, as cross-border issue CZ/BRD

Other bottlenecks:

- Connection to Pardubice and Hradec Králové agglomeration and improvement of waterway to Prague
- Low navigation draughts and clearances under bridges on Vltava to Prague
- Unsatisfactory performance of lock chambers
- Unfinished implementation of RIS and cross border data exchange with BRD

On the water – ecologically, cheap and troublefree



Development of waterways in the Czech Republic

Strategic framework

- ❑ **Transport policy for the period 2014-2020**
 - **Approved by government by Decree No 449 from 12/6/2013**
 - **The objective is improvement of conditions for competitiveness by modernisation of transport infrastructure including waterways**

- ❑ **Waterborne Transport Strategy**
 - **Strategy taken into account by government by Decree No 685 from 25/09/2017**
 - **National implementation tool for action programme NAIADES II tools and requirements of the TEN-T core network**
 - **Waterways infrastructure is necessary for provision of good conditions for waterway transport**
 - **Government should fulfill transparent support services for all users like environmental services, tow service, information support etc.**
 - **Waterways should provide user oriented services**
 - **Modern port infrastructure is necessary for efficient approach to the waterway transport, including innovative solutions:**
 - **New logistic services like citylogistic**
 - **Alternative fuels**
 - **Etc.**

On the water – ecologically, cheap and troublefree



Development of waterways in the Czech republic in last 20 years

What has been achieved?

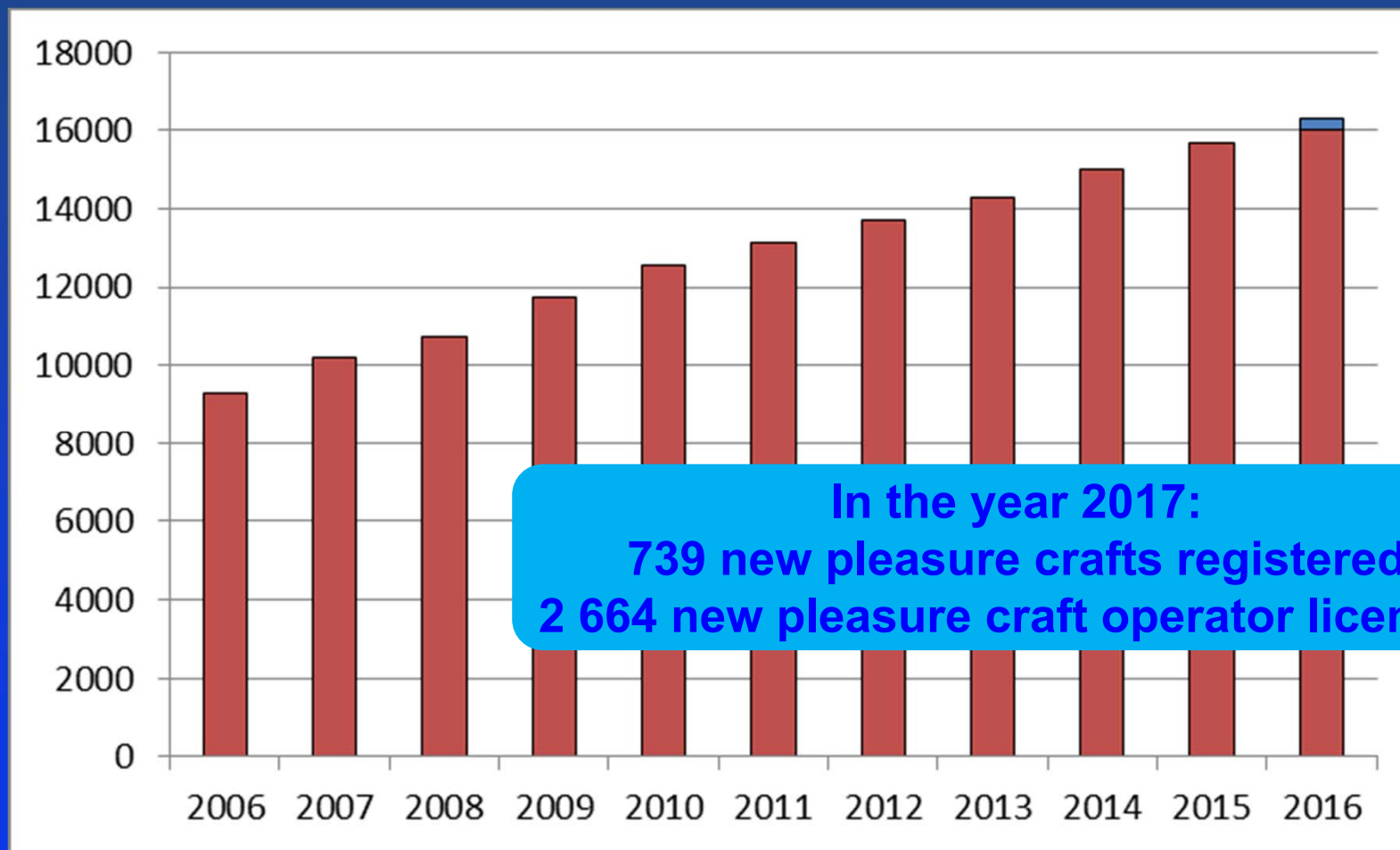
- ❑ **Flood protection for vessels finalised**
 - Elbe-Vltava waterway covered by basic network of protective harbours and berths
 - Flood 2013 confirmed right functionality
 - Only minor additions necessary
- ❑ **Modernisation of locks on Elbe finalised**
 - All 26 lock chambers modernised (till 12/2015)
- ❑ **On the whole Elbe available clearance under bridges 5,25 m**
- ❑ **New navigable Vltava waterway to České Budějovice**
 - 33 km new waterway with 4 locks, 2 public ports and 5 jetties
- ❑ **Bat'a canal at Moravia modernised**
 - All lock chambers modernised
 - Consistent network of public berths build



On the water – ecologically, cheap and troublefree



Pleasure craft number in the Czech Republic – in 10 years an increase of 80 %!



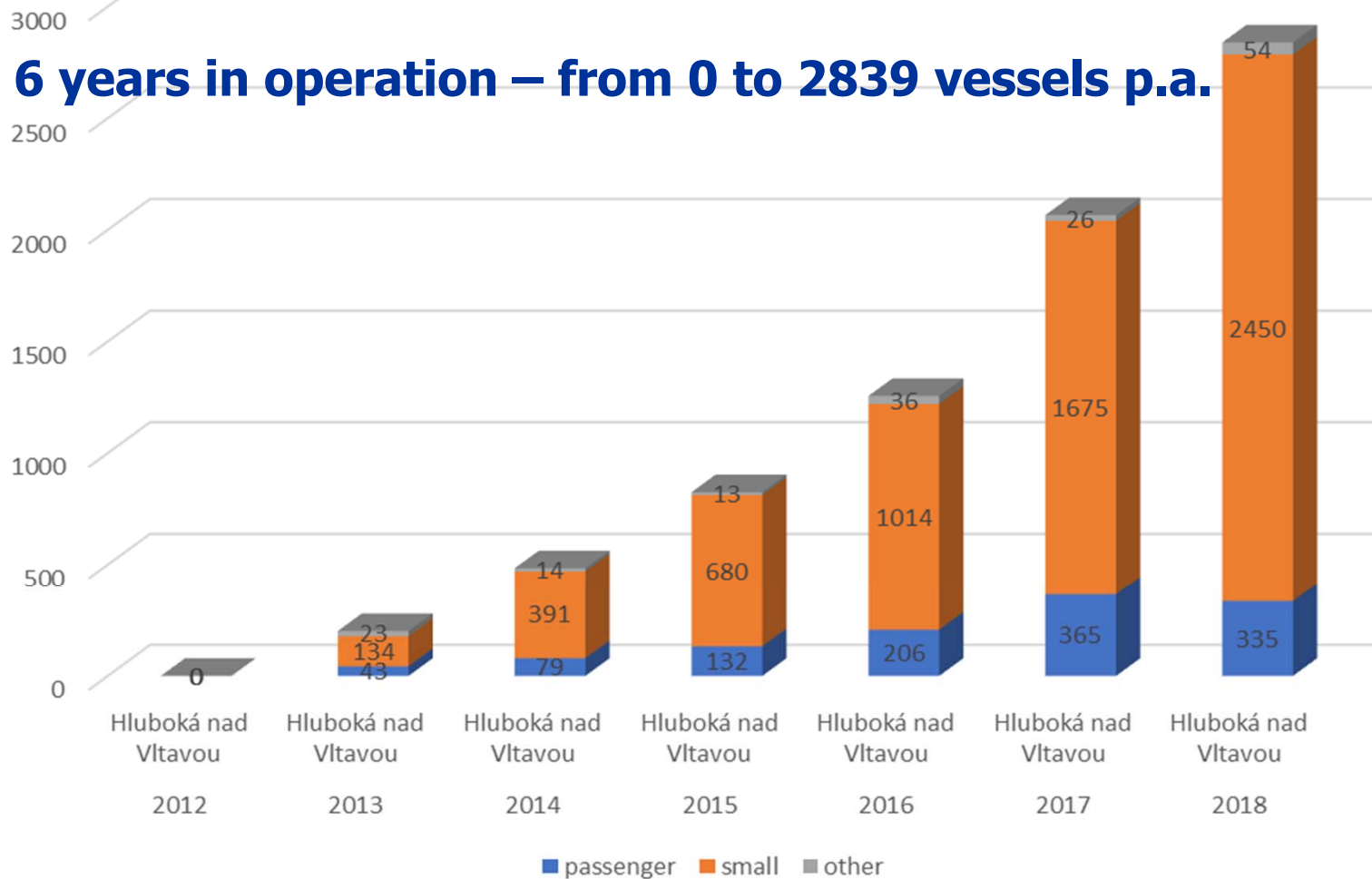
On the water – ecologically, cheap and troublefree



Pleasure navigation traffic

Lock passages at the new lock Hluboká nad Vltavou:

6 years in operation – from 0 to 2839 vessels p.a.



On the water – ecologically, cheap and troublefree

Who are the users of public waterways ?



Freight traffic



Sightseeing and liner passenger ships



Pleasure navigation



Cruise ships

Public berth needs



Freight traffic

- over-night berthing
- general supply for crews



Sightseeing and liner passenger ships

- Public berths with public access and supply (water, power, waste disposal)
- Public jetties like stops on the line



Pleasure navigation

- Long-time berthing
- Short-time berths for day or over-night berthing with access to shore



Cruise ships

- Public berths with high capacity public access and supply (water, power, waste disposal)



Waterborne Transport Strategy - ports and berths

Freight ports on TEN-T network:

- Extension of the state port network
- Grants scheme for private ports modernisation
- Environmental and support service centres

Pleasure and passenger ship port infrastructure

- Waiting berths in lock approaches
- Fulfillment of complete public berths network for the short-time berthing
- Provision of the capacity and complete network for middle-time and long-time berthing
- Environmental and support service centres

On the water – ecologically, cheap and troublefree



Infrastructure funding structure in CZ

Basic infrastructure (locks, fairway, canals etc.):

- Owned by the state
- Navigation is open and free of charge
- Operation and maintenance in the responsibility of Ministry of agriculture, done by state enterprises Povodí (state owned river basin management companies)
 - Financed by charges for water consumption
 - For transport infrastructure from 2016 new funding scheme from State Fund for Transport Infrastructure
 - On important traffic waterways there is a requirement for ensuring of waterway parameters
- Development of infrastructure on important traffic waterways in the responsibility of Ministry of Transport, done by the state organisation Directorate of Waterways



Infrastructure funding structure in CZ

Ports:

- The most number of ports – land area **owned by private companies**
- Quay walls, basins, dolphins owned by the state
- Some major ports in „public“ regime, with undiscriminated access for all vessels
- Utilisation of ports is in general charged
- Private infrastructure financed by private owners, with some grant programmes
 - Major limite is a long payback period and unstable waterway functionality (unstable port utilisation)
- **State owned ports and berths** (especially for pleasure navigation) financed by the state budget operated by the state organisation Directorate of Waterways
- Utilisation of ports are in general also charged (income covers operation costs)



Major freight ports on Elbe – Vltava waterway





Public berths for freight transport

- **Limited traffic volumes**
 - **Over-night mooring especially at lock chamber approaches (equipped by dolphins or quay walls)**
 - **Other mooring places and anchorages with shore mooring on an inclined bank**
- **On locks with higher traffic and pleasure navigation**
 - **Construction of separated berths on approaches for large ships and pleasure crafts**

Example:

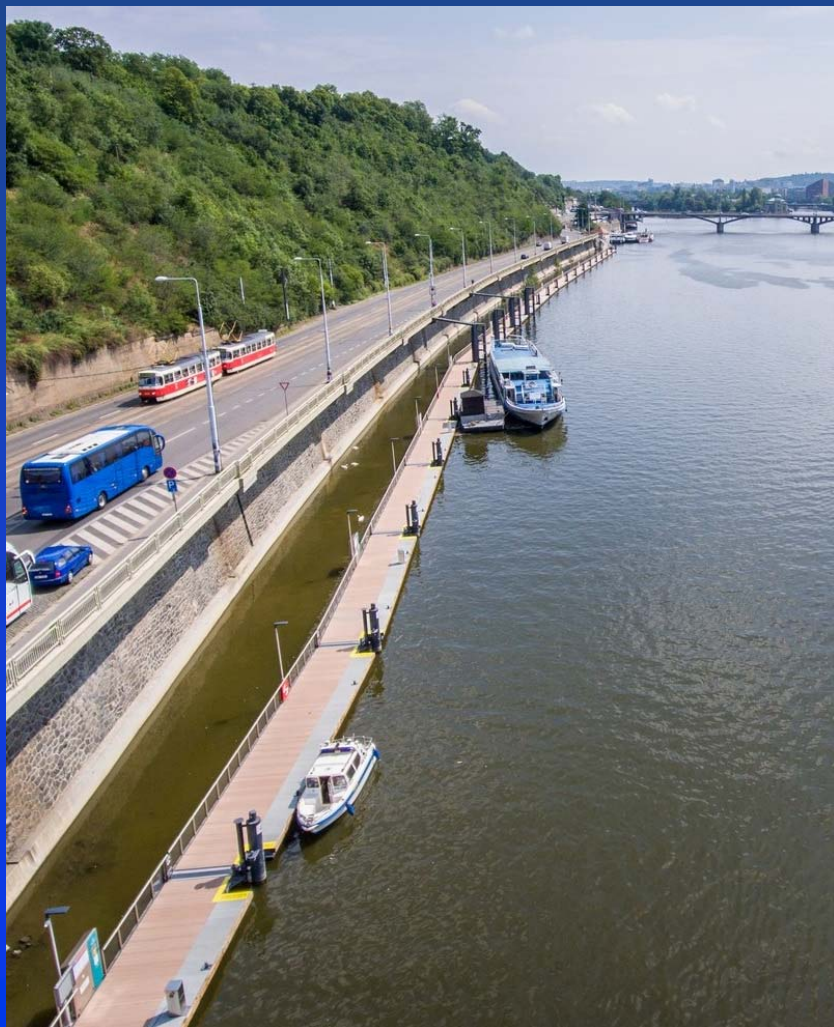
- **Modernization of lock chamber Štvanice approaches project in Prague, cofinanced by CEF**

- **Construction works started 11/2018, finished 12/2019**



On the water – ecologically, cheap and troublefree

Public berths for passenger ships



Example: Prague - Edvard Beneš embankment berth

- Floating berth 480 m long
- For passenger and cruise ships for short-time and long-time mooring
- Access of passengers to the city centre and to the coach bus stop close-by
- Shore power supply (400 V / 16 A, 32 A, 64 A, 125 A, 250 A Powerlock)
- Drinking water shore supply in preparation

On the water – ecologically, cheap and troublefree



Finished public jetties for passenger vessels on the Elbe



Libotenice



Lovosice



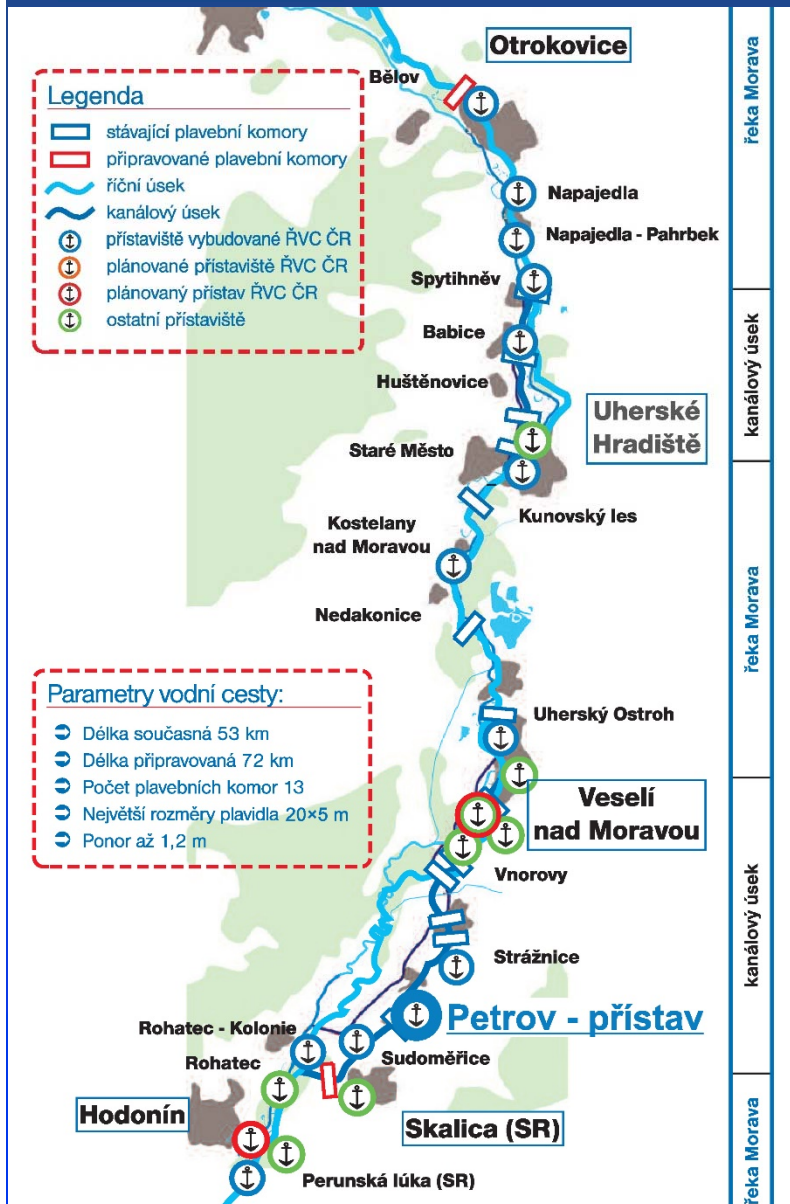
Ústí nad Labem-centrum



Dolní Zálezly

On the water – ecologically, cheap and troublefree

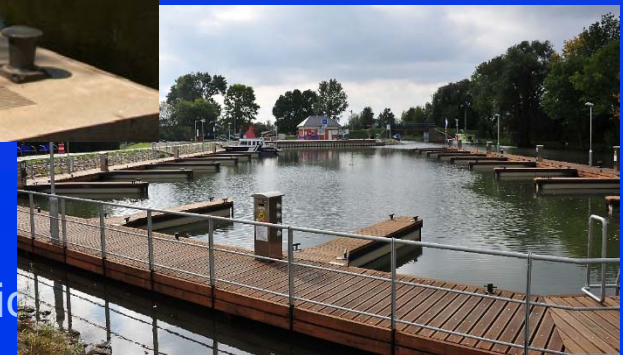
Berth infrastructure on small waterways



- Mixed utilisation for passenger ships (up to 20 m length on Baťa canal) and pleasure crafts

Best practice:

- Complete network of public berths on Baťa canal waterway (53 km long)**
- => 90 000 visitors per year
- Fixed berths with shore power supply (230 V 16A) and drinking water shore supply



On the water – ecologic



Berth infrastructure on small waterways



- Mixed utilisation for passenger ships (up to 44 m length on Vltava) and pleasure crafts

Best practice:

- Complete network of public berths on the new Vltava waterway towards České Budějovice (33 km long)
- Floating concrete berths
- Acces for the disabled
- Shore power supply

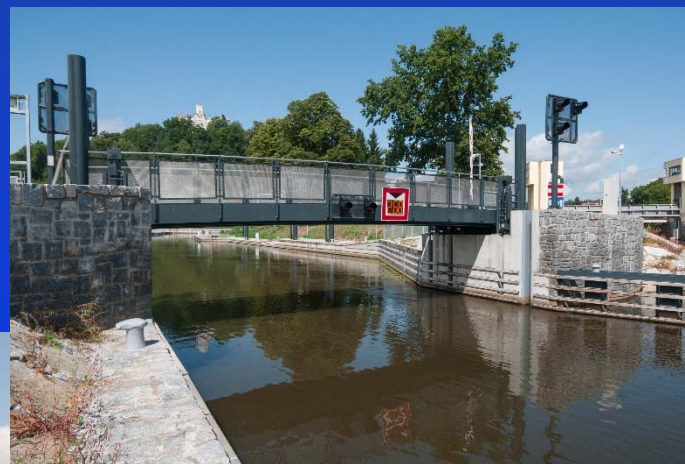


On the water – ecologically, cheap and troublefree



Public pleasure port Hluboká nad Vltavou

- 73 lots of small vessels
- 1 space design of the vessel in port
- parking for passenger shipping
- the maximum draft 1,3 m
- lifting bridge from 2,5 m to 5,25 m
- Information centre with sanitary facilities
- slope for small vessels

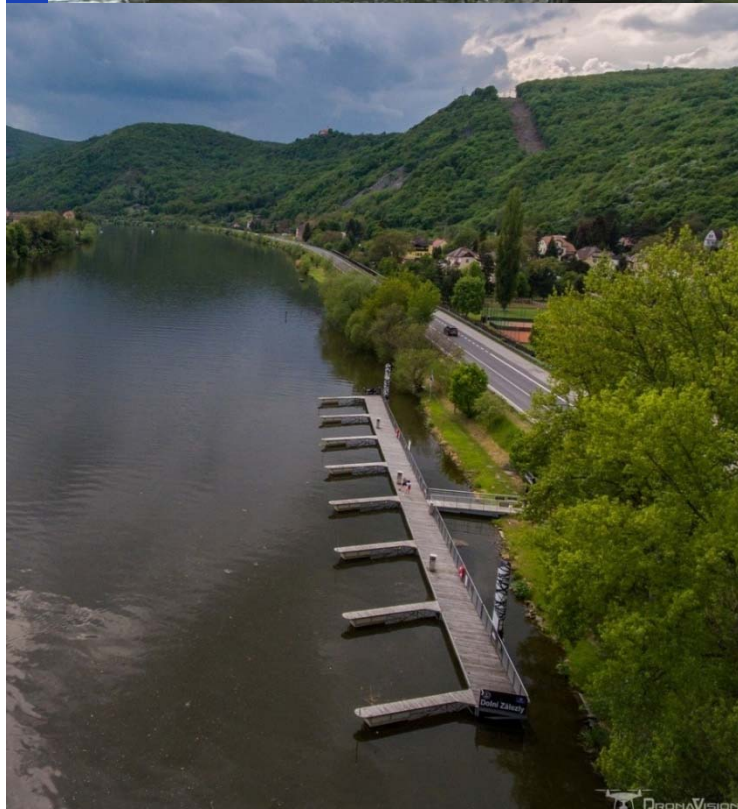


in operation
since 2015

cheap and troublefree

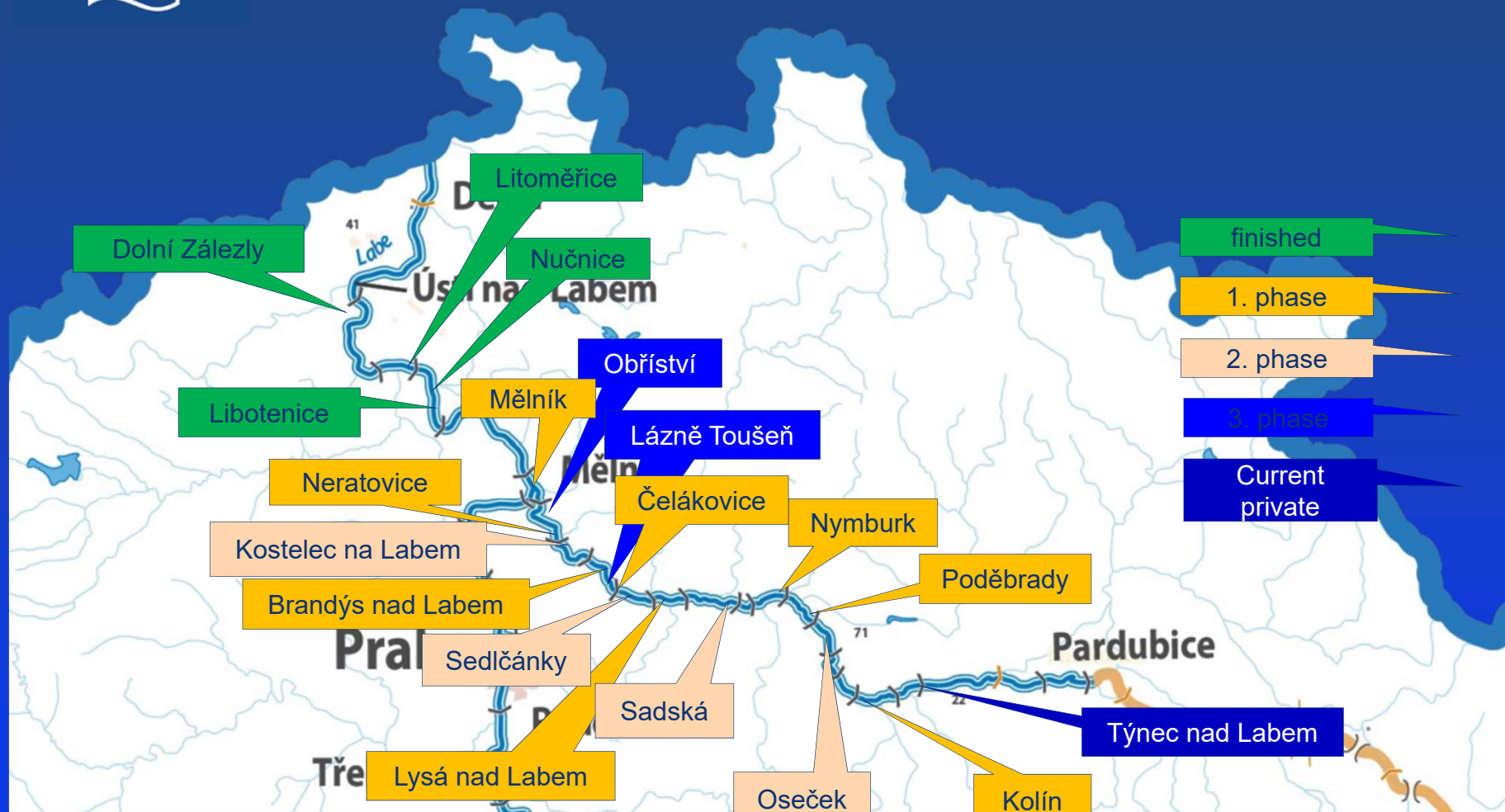


Finished jetties for pleasure boats on the Elbe



On the water – ecologically, cheap and troublefree

Extended network of pleasure craft berths on Elbe



On the water – ecologically, cheap and troublefree



Extended network of pleasure craft berths on Elbe

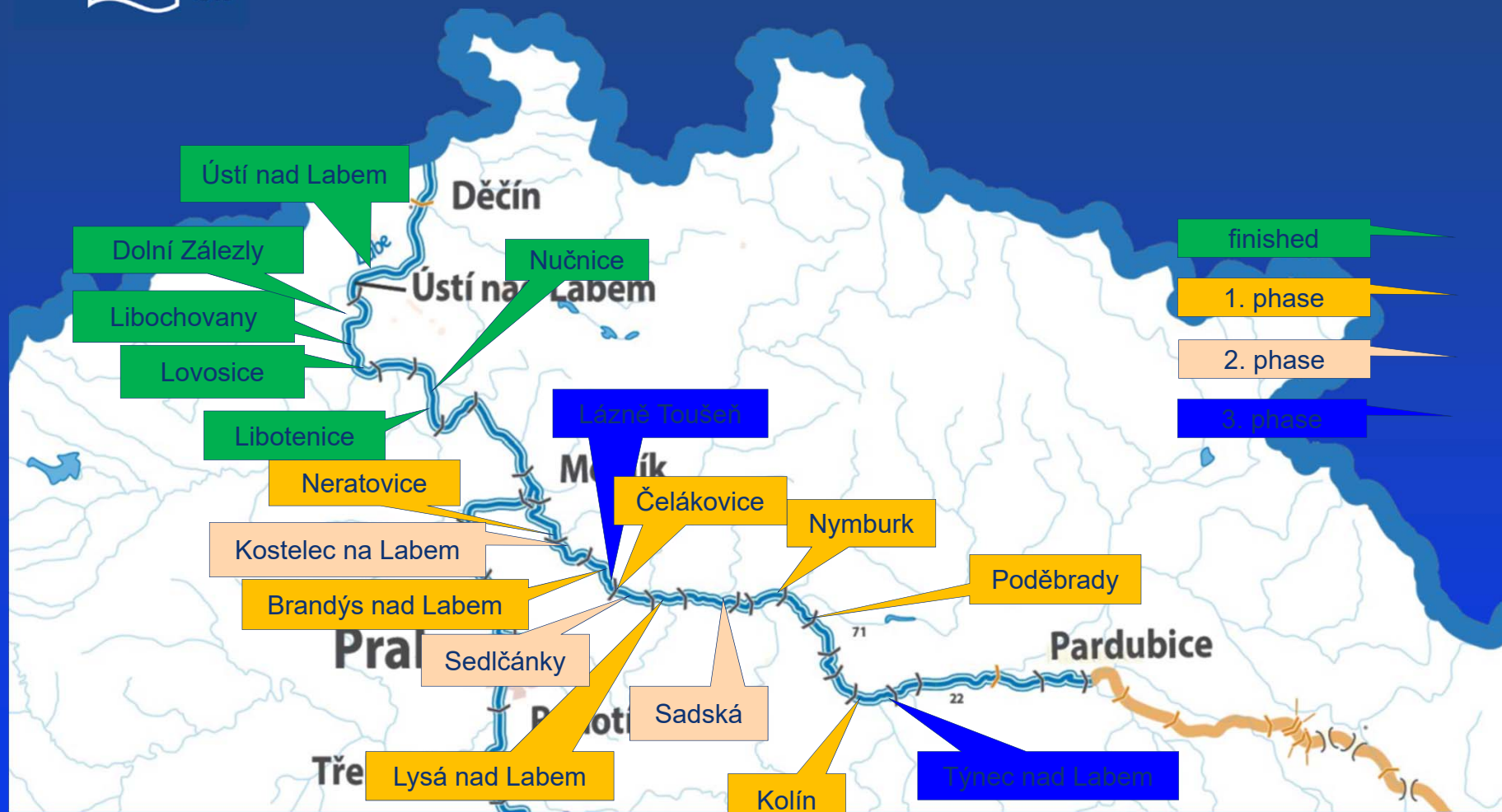
Examples:

- Floating berth for pleasure crafts
- Capacity 8 - 20 crafts
- Mooring up to 48 hours
- Shore power supply 230 V
- Drinking water shore supply
- Walking and cycle access for the surroundings visit





Extended network of passenger ship berths on Elbe



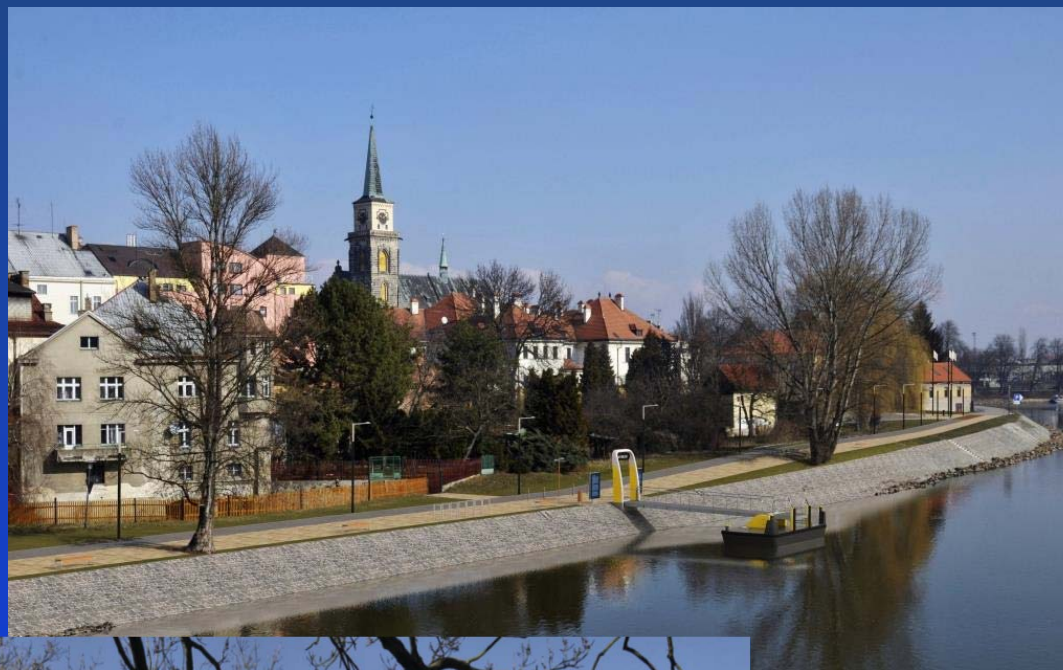
On the water – ecologically, cheap and troublefree



Extended network of passenger ship berths on Elbe

Examples:

- Floating berths for passenger ships up to 84m (110 m) length
- Wheelchair accessible access
- Mooring 15 min up to 48 hours
- On major places (cities):
 - Shore power supply 400 V
 - Drinking water shore supply
- Walking and cycle access for the surroundings visit
- sanitary facilities



and troublefree



Payment system for port services port card

Objectives:

- unattended use of port services
- minimal staff requirements
- unlimited operating time



Functions:

- Chip card for port services in the whole Czech Republic in state public ports and berths:
 - Shore power supply of vessels
 - Water shore supply
 - Sewage water collection from vessels
- Connection equipment installed on new ports and berths
- Chip card purchase as subscription card for service utilisation
- Recharging the card and list of transactions available digitally on pristavnikarta.rvccr.cz

On the water – ecologically, cheap and troublefree



Public environmental service and bunkering centres for vessels

Objectives:

- Water and land protection against pollution
- Safe manipulation with dangerous things (fuel)
- Support from the tourist use of waterways on the wider range
- Better maintenance quality → higher sustainability of vessels operation



Functions:

- Recharging of power supply
- Refilling of water tanks (drinking/non-drinking)
- Bunkering of fuel and other operation liquids (fuel, LPG, engine oil)
- Pumping out sewage water
- Collection of waste (general, selected, dangerous)

On the water – ecologically, cheap and troublefree



Waterways Directorate of the Czech republic

Lubomír Fojtů

www.rvccr.cz